

Got Scabies?

Pennsylvania Integrated Pest Management Program

Penn State Entomology



Disclaimers

- Products, vendors, or commercial services mentioned or pictured in the trainings or presentations are for illustrative purposes only and are not meant to be endorsements.
- Medical concerns must be addressed by a medical professional.
- Do not take legal action based on this presentation; consult a lawyer.
- Tenant's rights free services:
 - TURN: Tenant Union Representative Network (215) 940-3900
 - CLS: Community Legal Services (215) 981-3798



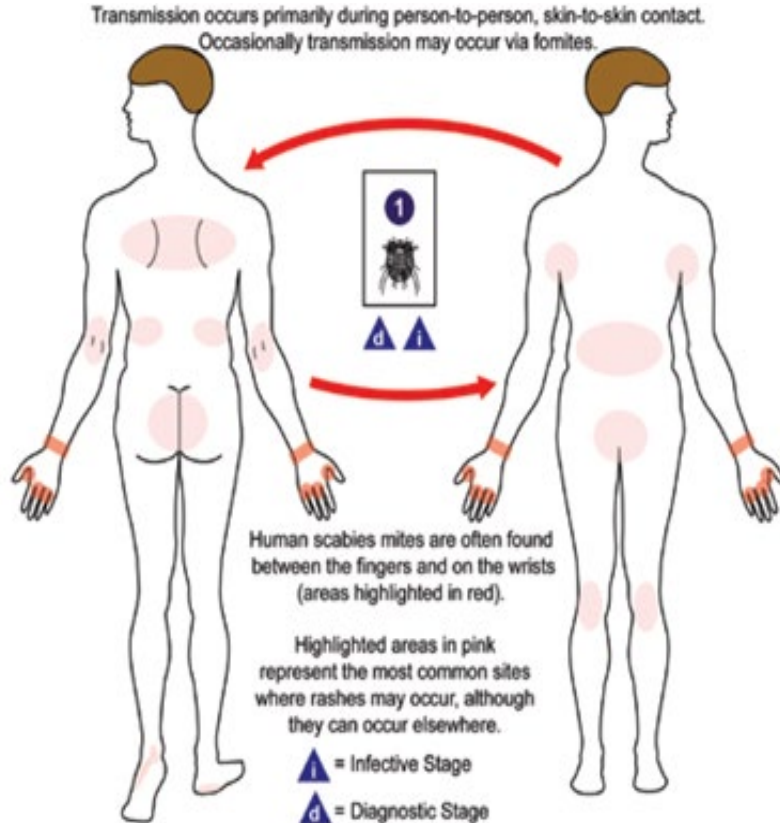


Scabies Mite

(*Sarcoptes scabiei* var. *hominis*)

Photo: Center for Disease Control
Actual size: ♀ $<1/32''$

Scabies life cycle



Eggs laid 2-4/day; 0.15mm long

- Females tunnel under skin ½"
- Eggs hatch 2-4 days

Nymphs migrate to surface & create new tunnels – 6-10 days

Females impregnated; emerge & start new cycle – 1-month life

- Males die after mating; seldom seen

- Skin scraping to diagnose

How do you get scabies?

- “Extended close personal contact”
 - Childcare, camps, nursing homes, prisons, etc.
 - Sexual contact
 - Rarely items (fomites)
- Pets can become infected
 - Not communicable to humans – different species
 - Vet treatment



What's the harm?

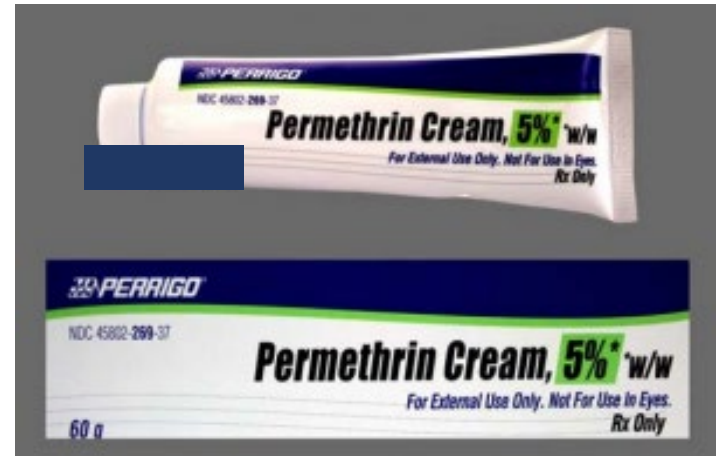


Image: iStock/helenecanada/eMedicineHealth

- Irritation
- Contagious
- “Crusted” or Norwegian scabies”

Treatment

- Medical diagnosis
- Wash clothes, bedding, etc.
- Rx *only* cream – neck to soles
- Wash off after 8-14 hrs.
 - Two treatments, 1-2 weeks
- Antihistamines
- Ivermectin – institutional outbreaks
 - Not for children



IPM for Pennsylvania Schools & Childcare

Introducing the 3rd Edition!

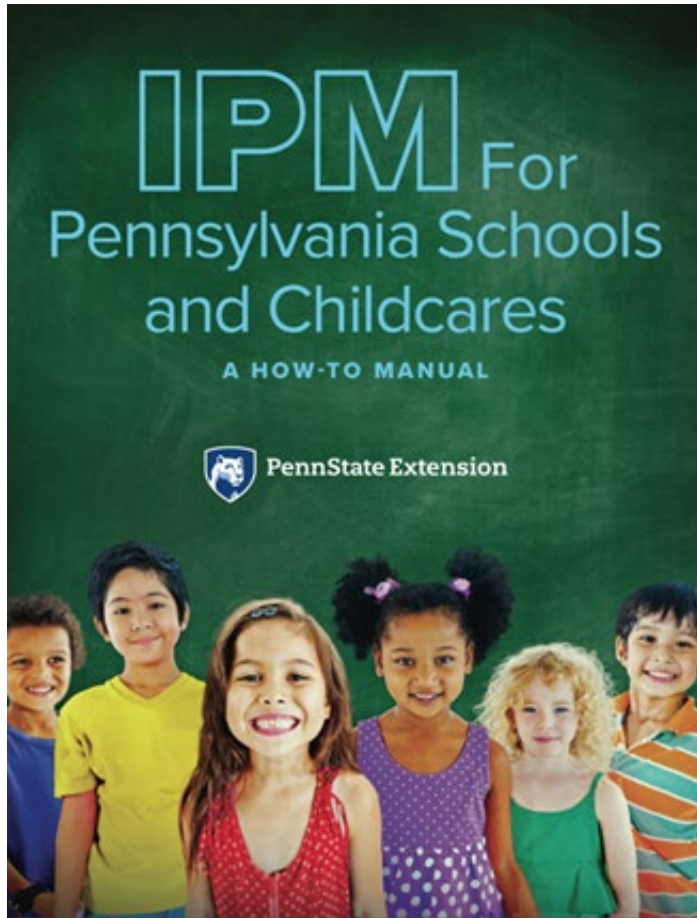
- New chapters
- Thorough revision
- New color photos

Hard copy \$39:

<https://extension.psu.edu/ipm-for-pennsylvania-schools-and-childcares-a-how-to-manual>

Free PDF:

<http://pages.extension.psu.edu/IPM-for-pa-schools-and-childcares>



Nondiscrimination Statement

The University is committed to equal access to programs, facilities, admission and employment for all persons. It is the policy of the University to maintain an environment free of harassment and free of discrimination against any person because of age, race, color, ancestry, national origin, religion, creed, service in the uniformed services (as defined in state and federal law), veteran status, sex, sexual orientation, marital or family status, pregnancy, pregnancy-related conditions, physical or mental disability, gender, perceived gender, gender identity, genetic information or political ideas. Discriminatory conduct and harassment, as well as sexual misconduct and relationship violence, violates the dignity of individuals, impedes the realization of the University's educational mission, and will not be tolerated. Direct all inquiries regarding the nondiscrimination policy to the Affirmative Action Office, The Pennsylvania State University, 328 Boucke Building, University Park, PA 16802-5901, Email: aao@psu.edu, Tel (814) 863-0471.



Editor: Dion Lerman
Amber Brunskill
Lyn Garling
Maria Gorgo-Gourovitch
Michelle Niedermeier

Sources as noted on slides and in References

Pennsylvania Integrated Pest Management Program Penn State University Department of Entomology

This work is supported by EIP grant # 2014-70006-22563 from USDA National Institute for Food & Agriculture (NIFA).



Pennsylvania Integrated Pest Management Program

Penn State Navy Yard

Bldg. 661

4960 S. 12th Street

Philadelphia, PA 19112

215-264-0582

dlerman@psu.edu