

Got Spotted Lanternfly?

Pennsylvania Integrated Pest Management Program

Penn State Entomology



Disclaimers

- Products, vendors, or commercial services mentioned or pictured in the trainings or presentations are for illustrative purposes only and are not meant to be endorsements.
- Medical concerns must be addressed by a medical professional.
- Do not take legal action based on this presentation; consult a lawyer.
- Tenant's rights free services:
 - TURN: Tenant Union Representative Network (215) 940-3900
 - CLS: Community Legal Services (215) 981-3798





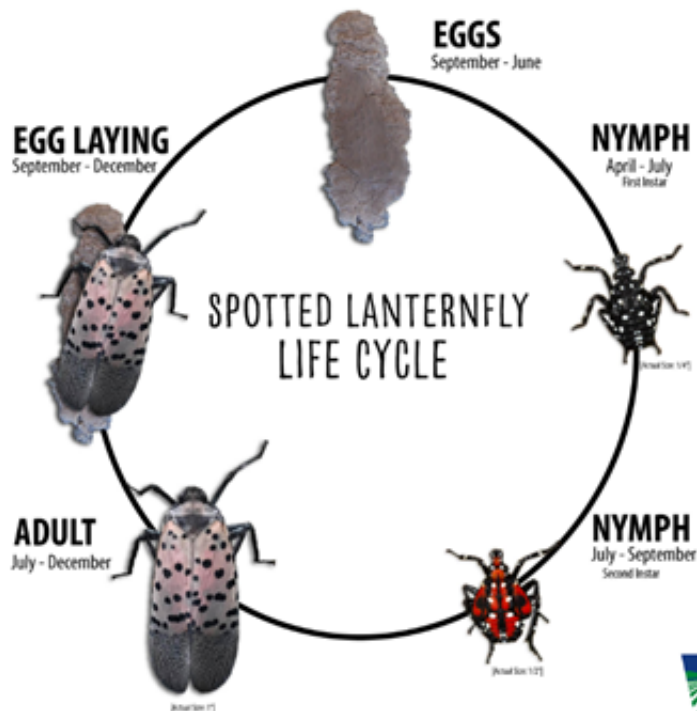
Spotted Lantern Fly (*Lycorma delicatula*)

Photo: N.J. Department of Agriculture



Lifecycle of SLF

Spotted Lanternfly Life Cycle



Female covering an egg mass



Egg mass

- **Eggs** overwinter
- **Hatch** May-June
- **Black** nymphs through July
- **Red** Nymphs July-September
- **Adults** July-December
- **Egg laying** September-December

How do they spread

- *Ailanthus* trees (Tree-of-Heaven)
 - Favorite SLF host
 - Invasive – widely distributed
- Hitchhike on cars, etc.
 - 60 MPH!
- Eggs & bugs hitchhike on shipments
 - Eggs overwinter, September-April



Ailanthus leaves

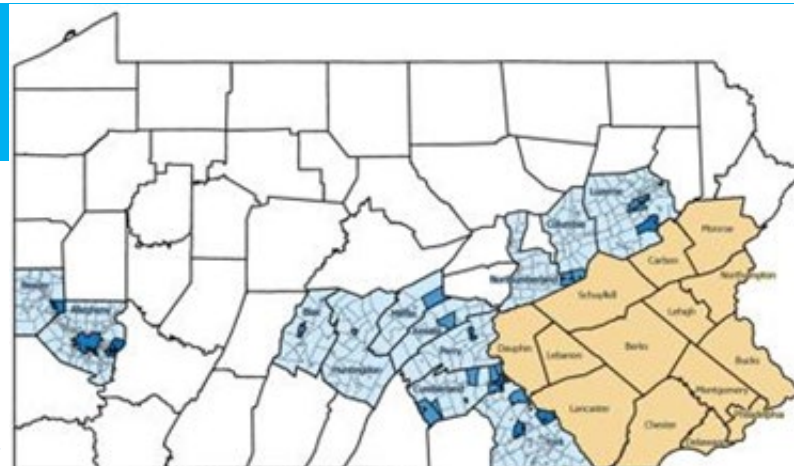
What's the harm?



Spotted lanternfly on apple in Berks County, PA in October 2017. Photo: Erica Smyers, Penn State

- True bug: Piercing-sucking mouthpart
 - Can kill host
 - Excretes honeydew
 - Supports sooty black mold
 - Feeds other pests
 - Sticky & disgusting
- Feed on over 70 plants:
 - Hard woods – Black walnut, maple
 - Softwoods – Pine trees
 - Succulent fruits – grapes, peaches
 - Agronomic crops – hops, soybeans
- Possible economic quarantine on PA products

Quarantine



1. Know the quarantine area
 - <https://extension.psu.edu/spotted-lanternfly>
2. Learn to ID all life-stages of SLF
3. Avoid parking or storing things under trees in infested areas.
4. Inspect all items that you need to move from within the quarantined area to areas outside the quarantined area.
5. All businesses that transport goods are required to get a permit issued through the PDA.
 - https://www.agriculture.pa.gov/Plants_Land_Water/PlantIndustry/Entomology/spotted_lanternfly/Documents/SLF%20Checklist%202011-12-2014.pdf
6. Use the checklist for residents if you need to move items that are not included in a permit through a business.
 - https://www.agriculture.pa.gov/Plants_Land_Water/PlantIndustry/Entomology/spotted_lanternfly/Documents/SLF%20Checklist%202011-12-2014.pdf
7. If you sell plants or mulch there are special regulations
 - https://www.agriculture.pa.gov/Plants_Land_Water/PlantIndustry/plant-health/Phytosanitary/Pages/default.aspx

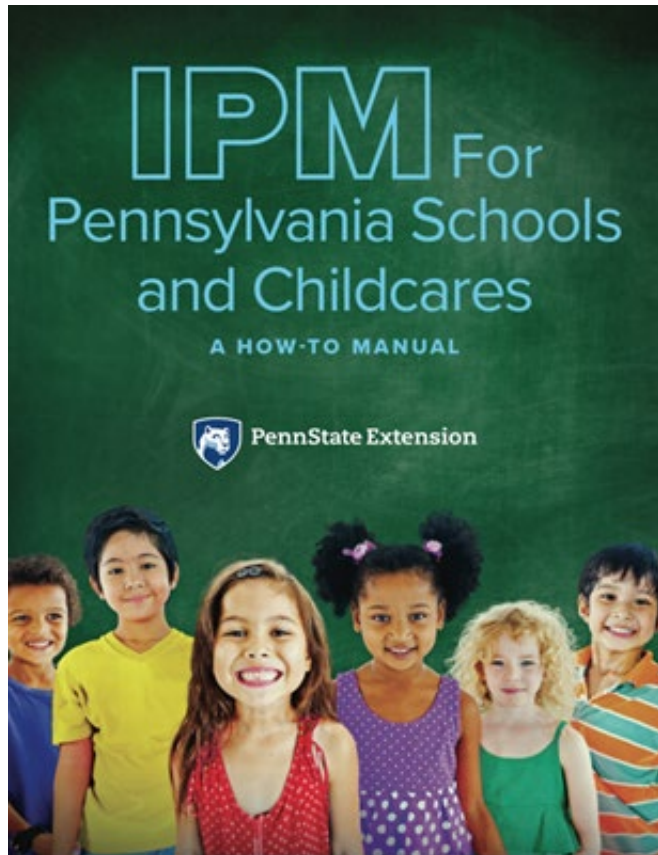
Management

Steps of Spotted Lanternfly Management



- Stop the spread
 - Inspect
- Scrape eggs
 - Smush & destroy
- Band trees to catch nymphs
 - Video: Spotted Lanternfly Tree Banding
<https://extension.psu.edu/spotted-lanternfly-banding>
- For more information on control:
 - <https://extension.psu.edu/spotted-lanternfly-management-for-homeowners>

IPM for Pennsylvania Schools & Childcare



Introducing the 3rd Edition!

- New chapters
- Thorough revision
- New color photos

Hard copy \$39:

<https://extension.psu.edu/ipm-for-pennsylvania-schools-and-childcares-a-how-to-manual>

Free PDF:

<http://pages.extension.psu.edu/IPM-for-pa-schools-and-childcares>



Nondiscrimination Statement

The University is committed to equal access to programs, facilities, admission and employment for all persons. It is the policy of the University to maintain an environment free of harassment and free of discrimination against any person because of age, race, color, ancestry, national origin, religion, creed, service in the uniformed services (as defined in state and federal law), veteran status, sex, sexual orientation, marital or family status, pregnancy, pregnancy-related conditions, physical or mental disability, gender, perceived gender, gender identity, genetic information or political ideas. Discriminatory conduct and harassment, as well as sexual misconduct and relationship violence, violates the dignity of individuals, impedes the realization of the University's educational mission, and will not be tolerated. Direct all inquiries regarding the nondiscrimination policy to the Affirmative Action Office, The Pennsylvania State University, 328 Boucke Building, University Park, PA 16802-5901, Email: aao@psu.edu, Tel (814) 863-0471.



Editor: Dion Lerman

Amber Brunskill

Lyn Garling

Maria Gorgo-Gourovitch

Michelle Niedermeier

Sources as noted on slides and in References

Pennsylvania Integrated Pest Management Program

Penn State University Department of Entomology

This work is supported by EIP grant # 2014-70006-22563 from USDA National Institute for Food & Agriculture (NIFA).



Pennsylvania Integrated Pest Management Program

Penn State Navy Yard

Bldg. 661

4960 S. 12th Street

Philadelphia, PA 19112

215-264-0582

dlerman@psu.edu