

**PENNSYLVANIA NATURAL HERITAGE PROGRAM
HABITAT MANAGEMENT FOR POLLINATORS**



Atlantis Fritillary (*Speyeria atlantis*) on forget-me-nots (*Myosotis* sp.)



Tri-colored bumble bee (*Bombus ternarius*) on common milkweed (*Asclepias syriaca*)

Contents

Introduction	3
Management Priorities	4
Inventory Habitats and Plants.....	4
Promote Habitat Variety to Support All Life Stages of Pollinators.....	5
Maintain Open Habitats.....	7
Control Invasive Plants.....	8
Protect Pollinator Diversity and Rare Species	9
Find Native and Local Plants.....	14
Books and Other Publications.....	20
Websites	20



Milkweeds such as this purple milkweed (*Asclepias purpurascens*) are a favorite nectar plant for many pollinators.

Photos by Betsy Leppo of the Pennsylvania Natural Heritage Program unless otherwise noted.

Introduction

The Pennsylvania Natural Heritage Program gathers and provides information on the location and status of important ecological resources. Pollinators are a research and conservation priority for our program as scientists seek to understand and reduce the threats that are contributing to the decline of pollinators, from honey bees and wild bees to butterflies and moths. Pollinators provide valuable ecosystem services that benefit humans directly and maintain the plant communities that support all wildlife. This document is intended to help PNHP staff and land managers evaluate how pollinator friendly a site is, and to identify management actions that will enhance a site for a variety of pollinators.

Pollinator habitats provide flowers where adult insects can gather food; they also grow food for the young. Caterpillars of different kinds of butterflies and moths may feed on a group of plants, such as grasses, blueberries, pines, or oaks. Others specialize on one or a few kinds of plants. Specialists include the monarch, bog copper, and Baltimore checkerspot butterflies, whose caterpillars feed on milkweeds, cranberries, and turtlehead, respectively. A similar trend is seen in native bees. The larvae of bees cannot seek food for themselves, so the adults must gather it for them. Adult bees gather nectar and pollen from specific kinds of plants to meet their nutritional needs. Some species of bees feed from a broad variety of plants. Others are specialists that feed from a very limited number of native plants. Some bees become active in early spring and are dependent upon ephemeral wildflowers that grow under trees in woodland settings and bloom before the tree canopy closes. Pollinator habitats also provide safe places for nesting and overwintering insects in burrows in soils, snags and fallen logs, grassy tussocks, abandoned rodent tunnels, and other sheltered sites.

Good pollinator habitats come in many shapes and sizes, including backyard gardens, old fields, wetland complexes, forest glades, shady woodlands, and floodplains. Each habitat supports a unique combination of flowering plants that appeal to different pollinators. Right-of-ways, roadsides, field edges, hedgerows, ditches, and other infrequently mowed areas can support nectar plants and nesting sites. These areas are often degraded by herbicides, road treatments, vehicle traffic, and poorly timed mowing, but they may still be a critical source of food if nectar resources are lacking elsewhere.



A great spangled fritillary (*Speyeria cybele*) feeds on common milkweed (*Asclepias syriaca*) along a roadside.

Management Priorities

The first step in developing a habitat management plan is to think about what you want to achieve with your property. List all of your wildlife, recreation, economic, and aesthetic goals. Ordering and reviewing priorities will help you decide how and when to conduct different management activities. It will also help identify where certain activities may conflict and serve at cross purposes to each other.

Inventory Habitats and Plants

The next step in developing a habitat management plan is to describe the current conditions of the site. List the types and approximate size of natural habitats on the property, including woodlands, meadows, streams, springs, and wetlands, as well as heavily managed landscapes such as farm fields, yards, and gardens. Describe the basic environmental conditions within each habitat, such as slope, soil, light, and moisture conditions.

Once you have determined your habitat types, visit each habitat every couple of weeks throughout the growing season. Note the type, abundance, and distribution of flowering trees, shrubs, grasses, and herbaceous plants. Even if you don't know the names of everything in bloom, you will get a sense of how many flowers are available to pollinators. Look for invasive plants that should be removed. Consider the quantity and distribution of potential nesting and overwintering sites. Most of our native bees are ground nesters and need easy access to soil that isn't densely vegetated, driven over, or plowed. Look for patches of bare or sparsely vegetated soils which may be located on eroding banks beside trails and dirt roads, along watercourses, in poor or rocky soils, and other disturbed areas. We also have many wood nesting bees that live in tunnels in decaying wood. Others chew little cavities inside old dead woody plant stems. Bumble bees nest in un-manicured grassy habitats where they can find empty rodent tunnels and other protected spaces under dense tussocks of grass.

If you need assistance identifying habitats and plants, contact your [County Master Gardener Program](#) or [County Conservation District](#). The Pennsylvania Game Commission also has a great [Private Landowner Assistance Program](#) which helps landowners of eligible properties develop habitat management plans for game and non-game wildlife.

Pollinator friendly habitats are great for plants that need pollinated, and for pollinators that need nectar and pollen resources. They are also great for animals that feed upon insects such as dragonflies, spiders, birds, bats, turtles, and salamanders. This fawn darner (*Boyeria vinosa*) was able to catch its fill of small flying insects in a streamside wet meadow.



Promote Habitat Variety to Support All Life Stages of Pollinators

To remember key features of pollinator habitat, think about these three 'Bs': blooms, beds, and bassinets. Blooms are flowering plants that provide nectar and pollen for adult insects. Beds are places for pollinators to rest and overwinter. Bassinets represent the food and nests needed by the developing young (caterpillars or larvae) of pollinator insects.

Pollinators need a continuous progression of blooms throughout the spring, summer, and fall. They also need a variety of flower colors and shapes within each season. If you have a gap in blooms on your property, you can look for trees, shrubs, and plants that will flower during the lulls and are suitable to your site conditions. Recommendations for pollinator plants are provided in the sections '*Find Native Plants*', '*Find Local Plants*', and Table 5 '*Native Plant Recommendations*'.

During the property inventory you may discover that you have few beds and bassinets. Different kinds of bees, moths, and butterflies have different nesting and overwintering needs, so habitat diversity is the key. When property size and conditions permit, aim to have scattered sunlit patches of bare or lightly vegetated soil in both forested and open habitats, allow leaf litter to accumulate under trees, leave standing snags and fallen logs, and maintain areas of infrequently mowed vegetation. These features are often in short supply in residential communities and agricultural areas, so even very small patches of these specific habitats will be helpful. Owners of smaller properties can artfully arrange brush piles or driftwood. Bird baths and ornamental water features can provide water for birds and insects alike. Bare dirt can be created in a low visibility section of a garden by clearing away mulch and ground cover so that patches of soil become exposed. It may be necessary to scrape and till an area first, but once the bare soil site is established it should not be disturbed other than to control vegetation on the surface by mowing and raking.

Other habitat improvements will take more effort but can make a big difference. Landowners can dedicate a portion of their yard or property to creating or enhancing meadow habitat. This may involve removing turf grass or clearing a patch of trees a half acre or larger to create a place for an upland or wet meadow planted with a mix of native grasses, sedges, and flowering plants. Reseeding soils that were disturbed during a construction project is another opportunity to create habitat for pollinators. Native seed mixes can be used that incorporate plants appropriate to the region and site conditions. The [Pennsylvania Bureau of Forestry Planting and Seeding Guidelines](#) document provides detailed recommendations for planting or seeding a site with native grasses, sedges, rushes, flowering plants, shrubs, deciduous trees, and conifers. Additional planting recommendations specific to pollinators are provided in the 'Find Native and Local Plants' section of this document. Landowners interested in gardening and farming can read the [Organic Farming for Bees](#) factsheets by the Xerces Society for recommendations on how to minimize the negative and maximize the positive effects of farming practices on pollinators.

Other common problems in pollinator habitats include encroachment by invasive plants, heavy deer browse, and succession of open fields into shrub thickets and young forest. In the next section we will discuss mowing to maintain open habitats and control invasive plants. There are also many resources available online provide in-depth information on habitat management for pollinators. Two excellent

guides are the Xerces Societies' [Pollinators in Natural Areas: A Primer on Habitat Management](#), and the USDA Natural Resource Conservation Service's [Pollinator Biology and Habitat](#).

Protecting pollinator plants from excessive deer browse is another difficult challenge in many regions of Pennsylvania. Fencing and tree tubes are good ways to protect your investment in native plantings. Good overviews of how white-tailed deer shape their environment are available at [DCNR's Role in Deer Management: Conserving Pennsylvania's Forests and Native Plants](#), in Penn State Extensions' [White-Tailed Deer](#), and in the USDA Forest Service Northeastern Area's [Impacts of White-Tailed Deer Overabundance in Forest Ecosystems: An Overview](#). Two publications that provide more detailed deer management recommendations include The Natural Lands Trust's [Deer Management Options](#) and the Cornell Cooperative Extension's [White-tailed Deer Wildlife Damage Management Fact Sheet](#).



Deer like to eat many of the same flowering plants needed by adult and larval insects. The thin-leaved sunflowers (*Helianthus decapetalus*) inside the fence grow twice the height and flower more vigorously than individuals growing outside the fenced area. The browsed plants are barely exceeding the height of the surrounding goldenrods. Photo by Roger Waldman.

Maintain Open Habitats

Existing old fields and meadows need periodic maintenance to remove woody shrubs and tree seedlings that will eventually shade out the flowering plants. Mowing can also maintain the vegetation's overall vigor and helps control invasive plants. It is important not to mow pollinator habitats during the growing season when flowers are in bloom. Generally the best time to mow is in the fall after the first frost or in early spring. Waiting until after the first frost to mow ensures that grassland birds have completed their nesting season, insects have stopped feeding on plant blooms and foliage, and desirable native plants have had time to develop and disperse their mature seeds. Soils are typically drier in the fall and less likely to get damaged by tractor tires. The vegetation is still upright before the winter snows beat it down, so it is easier to cut. Waiting until after snow melt is the best option if the site is dry enough to mow in the spring, as this leaves standing vegetation over the winter to provide shelter for insects, small birds, and mammals.

Cutting an entire field at one time is the simplest technique, but is least effective in creating habitat diversity and may not adequately provide both food and cover habitat for wildlife. The mowing options shown below are preferable because they create a variety of vegetation heights and types. In both mowing scenarios, no more than 1/3 of the field is mowed in a given year. The remaining 2/3 of the habitat is uncut that year, which leaves areas of more substantial winter cover. If wildlife is directly or indirectly disturbed by the mowing, there will be portions of the field left untouched where animals can find refuge. If the field is relatively uniform in plants, soils, and moisture, it does not matter much which blocks or strips are mowed in a year. However, if a portion of the field is different from the rest, e.g., is wetter or supports different types of plants, then design the blocks or strips so that not more than 1/3 to 1/2 of the unique area is mowed in a year. Note that a rotational approach is also recommended when using prescribed fire for habitat management, but allowing a minimum of three years recovery time in a habitat patch before reburning.

Decide upon a mowing schedule based on management goals for the site. Mowing every 1-3 years will maintain a relatively open meadow, while mowing every 3-5 years will allow shrubs to develop. The mower blade should be set to 6 inches or higher (8 inches is ideal) so that a tall layer of stubble is left behind as vegetative cover. Cleaning up the cuttings to prevent accumulation of plant litter will also help encourage a more meadow-like setting.

Block Method: Divide the field into three or more blocks and decide upon a mowing schedule based on management goals for the site. In this example, a field was divided into six blocks and placed on a three year mowing cycle. A particular block is mowed once every three years.

MOW YEARS 1, 4, 7...	MOW YEARS 2, 5, 8...	MOW YEARS 3, 6, 9...
MOW YEARS 3, 6, 9...	MOW YEARS 1, 4, 7...	MOW YEARS 2, 5, 8...

Strip Method: Conceptualize the field as a series of narrow strips. Decide upon a mowing schedule based on management goals for the site. No more than 1/3 of the strips should be mowed in a given year, with unmowed strips left between mowed ones. Strips do not have to be straight lines. Curving strips produce more edge and, when cut to follow the contour of the land, provide more erosion control. In this example, a 180 foot field is divided into nine 20-foot strips with each strip mowed at two year intervals.

MOW YEARS 1, 3, 5	MOW YEARS 2, 4, 6	MOW YEARS 1, 3, 5	MOW YEARS 2, 4, 6	MOW YEARS 1, 3, 5	MOW YEARS 2, 4, 6	MOW YEARS 1, 3, 5	MOW YEARS 2, 4, 6	MOW YEARS 1, 3, 5
----------------------	----------------------	----------------------	----------------------	----------------------	----------------------	----------------------	----------------------	----------------------

Control Invasive Plants

Invasive plants can provide flowers for adult pollinators, but in the long term do more harm than good. Invasive plants are marching into Pennsylvania woodlands, fields and wetlands, crowding out native plants and breaking the intricate links between native plants and wildlife. For a list of plants that are not native to the state, grow aggressively, and spread and displace native vegetation, see the [DCNR Invasive Plants List](#). Fact sheets with information on how to identify and control invasive plants are available at the [DCNR Invasive Plants Website](#). A few common and/or particularly problematic invasive plants are listed in Table 1. Each name contains a link to a factsheet developed by the Pennsylvania Department of Conservation and Natural Resources (PA-DCNR).

Table 1. Common invasive plants of Pennsylvania with links to the PA-DCNR factsheet providing information on identification and control of that plant.

Grasses	Herbs	Shrubs	Vines	Trees	Aquatic Plants
Bamboo	Yellow Flag Iris	Burning Bush	Oriental Bittersweet	Callery or Bradford Pear	Hybrid Cattail
Wavyleaf Basketgrass	Black, Brown & Spotted Knapweed	Common Buckthorn	English Ivy	Japanese Angelica Tree	Narrow-leaved Cattail
Cheatgrass & Poverty Brome	Japanese & Giant Knotweed	Glossy Buckthorn	Japanese Honeysuckle	Amur Maple	Didymo
Common Reed	Purple Loosestrife	European & Japanese Barberry	Japanese Hops	Norway Maple	Hydrilla
Reed Canary Grass	Moneywort	Multiflora Rosa	Kudzu	Mimosa	Curly Pondweed
Shattercane & Johnsongrass	Garlic Mustard	Privets	Mile-a-Minute	White Mulberry	Eurasian Watermilfoil
Chinese Silvergrass	Bull Thistle	Russian & Autumn Olive	Porcelain Berry	Princess Tree	Parrot Feather Watermilfoil
Japanese Stilt Grass	Canada Thistle	Shrub Honeysuckles	Pale and Black Swallowworts	Tree of Heaven	Brazilian Waterweed

Invasive plants are typically controlled by mechanical or chemical means. Regularly mowing invasives can control them without the use of chemicals. Plants that spread via seeds should be mowed before they go to seed. Hand pulling can be an effective control method for certain invasive plants. For example, garlic mustard is a serious invader of woodland habitats, displacing spring ephemeral wildflowers. The best means of controlling garlic mustard is through manual pulling before the plants flower and go to seed. If the plants are beginning to produce seed they should be bagged and removed from the site.

Herbicides are best reserved for treating dense stands of invasive plants where there are few 'non-targets' mixed in, or for spraying clumps of invasives that can be specifically treated without spraying surrounding desirable vegetation. When spraying is necessary, take steps to minimize exposure of pollinators to the spray. Avoid spraying plants when they are in bloom, or when wind could cause drift. Choose the most specific herbicide for the plants being targeted, and do not exceed the recommended concentration. Invasive grasses such as Japanese stiltgrass can be treated with a grass-specific herbicide which limits damage to non-target plants. In wet meadow situations where mowing is not possible in the fall due to chronically wet soils, a selective cutting of shrubs and sapling trees will help keep them open. Herbicide treatments in or near wet areas should be avoided whenever possible. When they are necessary, only use wetland-approved formulations.

Protect Pollinator Diversity and Rare Species

European honey bees were imported to the United States to pollinate crops, but long before that pollination of our native flowering trees, shrubs, and plants was accomplished by native pollinators, particularly insects in the orders Lepidoptera (butterflies and moths) and Hymenoptera (ants, bees, and wasps). The importance of pollinators was recognized in the recently updated [Pennsylvania State Wildlife Action Plan](#). As part of this plan, the conservation status was determined for 82 (out of 154) Pennsylvania butterflies, 147 (out of ~1,500) moths, and 4 (out of 357) native bees. No species of ants or wasps were evaluated. Critical habitats for rare and declining pollinators include grasslands, old fields, shrubby barrens, wet meadows, and woodland glades. Many pollinators utilize little pockets of unique habitat, and they need many of these habitat pockets scattered across the landscape. Loss and fragmentation of habitat is problematic but can be alleviated by protecting remaining habitat patches, restoring degraded habitats or creating new ones, and connecting the habitats with green corridors.

Variations in environmental conditions and natural fluctuations in population sizes can make it difficult to assess the condition of an insect population. Monitoring populations of species of concern over time is necessary to know if they are persisting at a site, and if habitat conditions are remaining favorable for that species. Populations of species of special concern should be monitored on a regular basis (every 3-5 years), and immediately before and after any management activity that may alter the habitat. Document changes in the condition of the soil, vegetation, water flow, etc.

In addition to surveying for pollinators, it is also relevant to monitor populations of nectar plants and caterpillar food plants (host plants). It is recommended that nectar and host plant surveys be conducted on a similar 3-5 year basis, and immediately before and after management activities. Surveys should focus on assessing abundance of nectar and host plant species as well as locating and

mapping nectar and host plants that are uncommon or patchily distributed. Once identified, good populations of nectar and host plants can be enhanced and protected during management activities that might impact them.

Bees

There are 371 species of bees known from Pennsylvania (Table 2) according to a 2010 paper by Donovall and VanEngelsdorp, and more may be discovered. Of these, 357 species are thought to be native to Pennsylvania; the remaining 14 were introduced to North America. Table 3 provides a summary of bee families known from Pennsylvania and some basic life history information. Most of the life history information in the table was obtained from the [University of Minnesota Bee Lab](#).

Bees make up a portion of a much larger group of insects in the order Hymenoptera, which includes bees, ants, hornets, wasps, and parasitoid wasps. More research is needed to determine how many species of Hymenoptera are in the state. There are nearly 18,000 species of Hymenoptera known from North America, so we expect our diversity in this group to exceed 1,000 for Pennsylvania (PA Biological Survey 2013). Our understanding of the conservation status of many bees is another area where more research is needed. The 2015 State Wildlife Action plan includes conservation status assessments for four species of bees in the state, but hundreds more species remain to be evaluated. In 2016 the US Fish and Wildlife Service proposed to list the rusty-patched bumble bee (*Bombus affinis*) as an endangered species under the Endangered Species Act. Other species of bumble bee that appear to be declining in the state, include the yellow-belted bumble bee (*Bombus terricola*), the American bumble bee (*Bombus pennsylvanicus*), and Ashton’s cuckoo Bee (*Bombus ashtoni*).

Table 2. Bee diversity in Pennsylvania by family; number of species (# spp) is listed for each genus.

Cellophane Bees (Colletidae)		Mining Bees (Andrenidae)		Sweat Bees (Halictidae)		Melittid Bees (Melittidae)		Mason, Leaf Cutter and Carder Bees (Megachilidae)		Carpenter, Cuckoo, Bumble, Digger, etc. (Apidae)	
Genera	# spp	Genera	# spp	Genera	# spp	Genera	# spp	Genera	# spp	Genera	# spp
<i>Colletes</i>	13	<i>Andrena</i>	92	<i>Dieunomia</i>	1	<i>Macropis</i>	3	<i>Lithurgus</i>	1	<i>Xylocopa</i>	1
<i>Hylaeus</i>	7	<i>Protandrena</i>	1	<i>Nomia</i>	1	<i>Melitta</i>	1	<i>Chelostoma</i>	1	<i>Ceratina</i>	3
Total	20	<i>Pseudopanurgus</i>	3	<i>Agapostemon</i>	4	Total	4	<i>Hoplitis</i>	4	<i>Nomada</i>	37
		<i>Perdita</i>	1	<i>Halictus</i>	6			<i>Osmia</i>	18	<i>Triepeolus</i>	10
		<i>Calliopsis</i>	1	<i>Lasioglossum</i>	52			<i>Heriades</i>	1	<i>Epeolus</i>	6
		Total	98	<i>Sphecodes</i>	10			<i>Anthidiellum</i>	1	<i>Holcopasites</i>	2
				<i>Augochlora</i>	1			<i>Anthidium</i>	2	<i>Epeoloides</i>	1
				<i>Augochlorella</i>	3			<i>Paranthidium</i>	1	<i>Ptilothrix</i>	1
				<i>Augochloropsis</i>	2			<i>Stelis</i>	5	<i>Eucera</i>	2
				Total	80			<i>Coelioxys</i>	11	<i>Melissodes</i>	11
								<i>Megachile</i>	25	<i>Peponapis</i>	1
								Total	70	<i>Svastra</i>	1
										<i>Anthophora</i>	4
										<i>Habropoda</i>	1
										<i>Bombus</i>	17
										<i>Apis</i>	1
										Total	99

Table 3. Families of bees in Pennsylvania with number of documented species and nesting habits. Life history information was obtained from the [University of Minnesota Bee Lab](#).

Common Name	Family	Nesting Habits	Comments
Cellophane and Masked Bees	Colletidae (20 species)	Solitary but may nest in aggregations; mostly nest underground but some in wood cavities	Cellophane bees make their own plastic-like plaster to smooth and line the walls of their nest cells.
Mining Bees and other Andrenids	Andrenidae (98 species)	Solitary, ground-nesting	Medium bees with shiny (usually hairless) black abdomens; among the first bees seen in the spring.
Sweat Bees, Green Sweat Bees, and other Halictids	Halictidae (80 species)	Social habits range from solitary to colonial; mostly ground-nesting	Small bees, some are bee-patterned but many are dark brown or black; some with metallic green or blue highlights; among the first bees seen in spring.
Melittid Bees	Melittidae (4 species)	Solitary, ground-nesting	Small to medium black bees; family contains many specialists that feed on a limited number of plants.
Mason, Leafcutter, and Carder Bees	Megachilidae (70 species)	Solitary; nesting locations vary and include underground burrows, hollow plant stems, wood cavities, and rock crevices. Construct nests with materials such as leaf cuttings, leaf pulp, plant fibers, wood pulp, resin, soil and gravel.	Medium (honey-bee sized), stout bees, with large heads and mandibles for cutting and chewing nesting materials. Carry pollen under their abdomen instead of on their legs. Important pollinators, several species are used commercially.
Cuckoo, Carpenter, Digger, Bumble, Orchard, Long-Horned, and Honey Bees	Apidae (99 species)	Social habits range from solitary to colonial; nesting locations vary and include underground burrows, wood cavities. Cuckoo bees lay their eggs in the nests of other bees.	A diverse group that contains familiar bees such as honey bees and bumble bees.

Butterflies and Moths

Another large group of pollinator insects are in the order Lepidoptera. Pennsylvania has over 150 species of butterflies and 1500 species of moths. Most butterflies are pollinators and many moths are as well. Hawk and sphinx moths are known to be important pollinators, but more research is needed to identify which moths are effective pollinators, and what kinds of plants they typically select for nectar. While adult pollinators benefit plants by helping them reproduce, the larval stage of pollinators such as butterflies and moths eat plant leaves, flowers, and fruits. Virtually every native plant in Pennsylvania has a caterpillar that will feed upon it. Caterpillars usually don't kill their hosts by feeding on them, but plants are continually evolving chemical and physical defenses to protect themselves from herbivory. Caterpillars must also continue to evolve to overcome plants' defenses, and sometimes even turn them to their own advantage. The monarch caterpillar is a classic example. Milkweed plants contain chemicals that make them distasteful and unpalatable to most insect and mammal herbivores. Monarch caterpillars evolved to tolerate these toxins, and can even sequester them in their own bodies, which makes them distasteful to predators.

The woody trees and shrubs that blanket our forested landscapes are an integral part of any wildlife habitat. Woodlands create the woody debris, leafy carpets, and rich organic soils that nurture woodland wildflowers. They surround and protect special habitats like woodland openings (glades), shale and serpentine barrens, seeps and springs, bogs, swamps, and other wetlands. They provide food and shelter for all the birds, mammals, and insects in the forest. Great numbers of caterpillars develop on woody plants, and in turn become food for other wildlife. Baby songbirds especially depend upon caterpillars because they are easy to eat and energy rich morsels of food. Woody trees and shrubs that support high species diversity and abundance of Lepidoptera include oaks, willows, cherries, plums, birches, poplars, crabapples, blueberries and huckleberries, cranberries, maples, elms, pines, hickories, hawthorns, alders, spruces, ashes, basswood, linden, hazelnut, walnut, butternut, beech, and chestnuts (Tallamy 2009).

Some native plants support rare and/or specialized pollinators. Table 4 '*Rare butterflies of Pennsylvania and their caterpillar host plants*' lists butterflies of conservation concern found in Pennsylvania based upon the State Wildlife Action Plan (2015). The species are organized by habitat and caterpillar host plants.



New Jersey tea (*Ceanothus americanus*, left) and wild indigo (*Baptisia tinctoria*, right) are the caterpillar food plant for several rare Lepidoptera in Pennsylvania. These plants do well on sandy, sunny sites with exposed soils but are often browsed heavily by deer.



Table 4. Rare butterflies of Pennsylvania and their caterpillar host plant.

Barrens and Grassy Openings, caterpillars feed on grasses or flowering plants			
Common Name	Caterpillar Food Plant	Common Name	Host Plant
Cobweb Skipper	bluestem grasses	Frosted Elfin	wild indigo
Common Roadside Skipper	grasses	Grizzled Skipper	dwarf cinquefoil
Dusted Skipper	bluestem grasses	Mottled Duskywing	New Jersey tea
Indian Skipper	grasses	Olympia Marble	rock cresses
Leonard's Skipper	grasses	Persius Duskywing	wild indigo
Swarthy Skipper	bluestem grasses	Regal Fritillary	violets
		Southern Cloudywing	legumes, esp. tick trefoils
Woodlands and Glades, caterpillars feed on flowering plants			
Common Name	Caterpillar Food Plant	Common Name	Host Plant
Falcate Orangetip	bitter & rock cresses, toothworts	Appalachian Azure	black cohosh
West Virginia White	toothworts	Columbine Duskywing	wild columbine
Northern Crescent	asters	Dusky Azure	goatsbeard
Northern Metalmark	round-leaved ragwort	Golden-banded Skipper	thicket bean
Silvery Checkerspot	wingstem, other composites	Silvery Blue	legumes, esp. Carolina vetch
		Monarch	milkweeds
Woodlands, Shrublands and Glades, caterpillars feed on woody shrubs and trees			
Common Name	Caterpillar Food Plant	Common Name	Host Plant
Brown Elfin	blueberries	Acadian Hairstreak	willows
Pink-edged Sulphur	blueberries	Compton Tortoiseshell	Birches, willows, elm
Henry's Elfin	redbud	Green Comma	birches and willows
Hoary Elfin	trailing arbutus	Coral Hairstreak	wild cherry
Juniper Hairstreak	red cedar	Early Hairstreak	beech and beaked hazelnut
Gray Comma	currants	Edward's Hairstreak	scrub oak
Pipevine Swallowtail	pipevines	Oak Hairstreak	oaks
Zebra Swallowtail	pawpaw		
Wet meadows and wetlands, caterpillars feed on flowering plants or shrubs			
Common Name	Caterpillar Food Plant	Common Name	Host Plant
Atlantis Fritillary	violets	Baltimore Checkerspot*	turtlehead*
Silver-bordered Fritillary	violets	Harris' Checkerspot	flat-topped white aster
Bronze Copper	docks	Bog Copper	cranberries
Harvester	caterpillars feed on wooly aphids, typically those on alders or beech	<i>*Some populations of Baltimores have caterpillars feeding in uplands on narrowleaf plantain or yellow false foxglove. Mature caterpillars will feed on additional plants.</i>	
Wet meadows and wetlands, caterpillars feed on wetland grasses or sedges			
Common Name	Caterpillar Food Plant	Common Name	Host Plant
Arctic Skipper	grasses, esp. blue joint grass	Eyed Brown	sedges
Black Dash	sedges	Long Dash	grasses
Broad-winged Skipper	sedges and common reed	Mulberry Wing	sedges
Dion Skipper	sedges	Two-spotted Skipper	sedges

Find Native and Local Plants

Native Plants

The best plants for pollinators are native to the local region and appropriate for site conditions. The U.S. Fish and Wildlife Service's [Attracting Pollinators to Your Garden Using Native Plants](#) provides a good introduction and overview to gardening for pollinators, from plant selection to providing artificial nest sites. Helpful guides for selecting plants include the Xerces Societies' [Pollinator Plants for the Great Lakes Region](#) (covers the northwest half of the state) and [Pollinator Plants for the Mid-Atlantic Region](#) (covers the southeast half of the state). The USDA Natural Resource Conservation Service's [Pollinator-Friendly Plants for the Northeast United States](#) includes large photos that showcase some beautiful native plant options for gardening enthusiasts. Another great tool for picking plants for a site is the [iConserve Pennsylvania Plants Database](#). You can search the Plants Database and get recommendations for plants, shrubs, and trees native to Pennsylvania based on site conditions, flower colors, etc.

Many garden centers have native plants for sale, but the term 'native' covers a lot of territory if it means that the plant is native to the United States. A plant that is native to Florida or even a closer state like New Jersey may not occur naturally in the wild in Pennsylvania. It is also common to find cultivars of native plants which are bred to be showy but may be less beneficial for wildlife. There are nurseries that specialize in native plants, and they can help landowners find the best native plants for their property. [iConserve Pennsylvania](#) maintains a list of [Native Plant Nurseries](#) throughout the state. Knowledgeable nursery staff will also be able to provide information on the 'provenance' of the plant. Provenance refers to where an individual plant and the previous generations that produced it came from. Stock grown from the seeds of plants that originated in Pennsylvania is preferred over stock grown from plants that originated elsewhere in the U.S. or abroad. Please see the section '*Find Local Plants*' for more information related to picking plants that are best suited to your location.

If you are interested in a specific plant and want to know if it is native to Pennsylvania, [The Pennsylvania Flora Project of Morris Arboretum](#) website has this information. The search window requires an exact match for the common or scientific name in order to get a result. The database may use a common or scientific name that differs from what is listed in popular field guides. The best way to find a plant at this website is to start typing in a genus name. If you type in the genus for milkweeds (*Asclepias*), a list of all the *Asclepias* known from Pennsylvania will appear. Select a species from the list and then click on the magnifying glass button to see a description of the plant and distribution map. The word 'introduced' is used to indicate a plant that is not native to Pennsylvania. The distribution map will help you determine if the plant is known from your region of Pennsylvania. For example, if you live in the Ridge and Valley and want to grow the plants native to your region, you can avoid plants that only grow in the very southeastern or northwestern corner of the state. This [Physiographic Provinces of Pennsylvania](#) map shows all the unique regions of the state.

Local Plants

After you come up with a list of plants that are found in nature in Pennsylvania, you can go a step further and look for plants that were grown from stock originating in Pennsylvania. There are many reasons to look for plants whose provenance is from a location as close to your site as possible. Local plants are best prepared to thrive in local climate, soils, and precipitation conditions. This leads to better overall plant health, including germination, survivorship, flowering, and seed set. For example, a red maple seedling whose ancestors originated in the Ridge and Valley of Pennsylvania will carry with it adaptations in its genetic blueprint that help it thrive in that region of Pennsylvania. You could plant a red maple seedling whose ancestors originated in the Everglades of Florida, but that seedling will carry adaptations to very different soil and climatic conditions.

Finding seed or plants grown from parent plants with local provenance will require some detective work, but as more people request plant material grown from local plants, the more available they will become. Try to find plants with a provenance as close to your location as possible, preferably within Pennsylvania, or at a minimum from within the [Northeastern US or mid-Atlantic region](#). You can talk to a nursery about growing stock for you from seeds collected locally. There are rules governing plant collection, especially if you want to gather material from state lands. Please be sure to obtain permission from the landowner before gathering any plant material, including seeds or stem cuttings.

Table 5 '*Native Plant Recommendations*' lists native plants that provide nectar and pollen for adults and/or serve as food plants for the young. This is not an exhaustive list of all the important pollinator plants in Pennsylvania. It provides a representative selection of Pennsylvania native species across a range of flower types, habitats, and blooming seasons. Regional pollinator planting guides and other pollinator research and literature was consulted. Only plants that occur naturally in the wild in Pennsylvania were included on this list. Species that naturally occur statewide were preferentially selected. Species with extremely limited distributions in Pennsylvania were generally avoided unless they are known to serve as a host plant for a rare pollinator species.



Different shaped and colored flowers appeal to different pollinators. This bumble bee crawls happily into the throat of a turtlehead flower (*Chelone glabra*). In addition to providing nectar to adult insects, the foliage of turtlehead plants is the preferred host plant for Baltimore checkerspot, a butterfly of conservation concern in Pennsylvania.

Table 5. Recommendations of native flowering plants, shrubs, and trees in Pennsylvania.

SRING	SUMMER	FALL
The first pollinators appear early in the spring and need to quickly find energy rich nectar. Foundress bumble bee queens emerge from hibernation and seek nectar and pollen to begin the work of building their colony.	As spring progresses into summer, new species of butterflies and bees become active. Long lived insects need a variety of native plants that provide a continuous progression flowers	Flowers remain a critical resource in the fall. Bees must build up their energy reserves before winter. Migratory hummingbirds and monarchs visit flowers to refuel as they fly long distances to wintering grounds.

Table 5. Herbaceous Plants

Scientific Name	Common Name	Habitat	Spring Mar-May	Summer Jun-Aug	Fall Sep-Nov
Agastache scrophulariifolia	purple giant hyssop	Wetland		X	X
Amianthium muscaetoxicum	fly-poison	Upland	X	X	
Anemone virginiana	tall anemone	Upland		X	
Apocynum cannabinum	common dogbane	Upland		X	
Arabis canadensis	sicklepod	Upland	X	X	
Arabis laevigata	smooth rockcress	Upland	X	X	
Arabis lyrata	lyre-leaved rockcress	Upland	X	X	
Aristolochia macrophylla	Dutchman's pipe	Upland	X	X	
Aristolochia serpentaria	Virginia snakeroot	Upland	X	X	
Aruncus dioicus	goat's beard	Upland	X		
Asclepias incarnata	swamp milkweed	Wetland		X	
Asclepias syriaca	common milkweed	Upland		X	
Asclepias tuberosa	butterfly milkweed	Upland		X	
Aureolaria flava	smooth yellow false foxglove	Upland		X	X
Aureolaria pedicularia	cut-leaf false foxglove	Upland		X	X
Baptisia tinctoria	wild indigo	Upland	X	X	
Caltha palustris	marsh-marigold	Wetland	X	X	
Cardamine concatenata	cutleaf toothwort	Upland	X		
Cardamine diphylla	two-leaved toothwort	Upland	X	X	
Cardamine pennsylvanica	Pennsylvania bittercress	Wetland	X	X	
Cerastium nutans	nodding chickweed	Upland	X	X	
Chamaecrista fasciculata	partridge pea	Upland		X	
Chelone glabra	white turtlehead	Transition		X	X
Cirsium discolor	field thistle	Upland		X	X
Cirsium muticum	swamp thistle	Wetland		X	X
Cirsium pumilum	pasture thistle	Upland		X	
Claytonia virginica	spring-beauty	Upland	X		
Collinsonia canadensis	horse balm	Upland		X	X
Coreopsis tripteris	tall tickseed	Upland		X	X
Dicentra canadensis	squirrel-corn	Upland	X		

Table 5. Herbaceous Plants Continued

Scientific Name	Common Name	Habitat	Spring Mar-May	Summer Jun-Aug	Fall Sep-Nov
<i>Dicentra cucullaria</i>	dutchman's-breeches	Upland	X		
<i>Doellingeria umbellata</i>	flat top white aster	Wetland		X	X
<i>Erigeron pulchellus</i>	Robin's plantain	Upland	X	X	
<i>Erythronium americanum</i>	yellow trout-lily	Upland	X		
<i>Eupatorium perfoliatum</i>	boneset	Wetland		X	X
<i>Eurybia divaricata</i>	white wood aster	Upland		X	X
<i>Eurybia macrophylla</i>	big leaf aster	Upland		X	X
<i>Euthamia graminifolia</i>	grass-leaved goldenrod	Upland		X	X
<i>Eutrochium fistulosum</i>	hollow joe-pye weed	Wetland		X	X
<i>Eutrochium purpureum</i>	sweet-scented joe-pye weed	Transition		X	X
<i>Gentiana andrewsii</i>	bottle gentian	Transition		X	X
<i>Helenium autumnale</i>	common sneezeweed	Wetland		X	X
<i>Helianthus decapetalus</i>	thin-leaved sunflower	Upland		X	X
<i>Heliopsis helianthoides</i>	ox-eye sunflower	Upland		X	
<i>Hibiscus moscheutos</i>	rose-mallow	Wetland		X	X
<i>Houstonia caerulea</i>	bluets	Upland	X		
<i>Liatriis spicata</i>	blazing-star	Upland		X	
<i>Lobelia cardinalis</i>	cardinal flower	Wetland		X	X
<i>Lobelia siphilitica</i>	great blue lobelia	Wetland		X	X
<i>Lupinus perennis</i>	blue lupine	Upland	X	X	
<i>Lysimachia ciliata</i>	fringed loosestrife	Wetland		X	X
<i>Lysimachia terrestris</i>	swamp-candles	Wetland		X	
<i>Mertensia virginica</i>	Virginia bluebells	Upland	X		
<i>Mimulus ringens</i>	monkey flower	Wetland		X	X
<i>Monarda didyma</i>	scarlet beebalm	Wetland		X	
<i>Monarda fistulosa</i>	wild bergamot	Upland		X	X
<i>Monarda media</i>	purple bergamot	Transition		X	X
<i>Oenothera biennis</i>	common evening primrose	Upland		X	X
<i>Packera aurea</i>	golden ragwort	Transition	X		
<i>Packera obovata</i>	roundleaf ragwort	Upland	X		
<i>Penstemon digitalis</i>	tall white beardtongue	Upland	X	X	
<i>Penstemon hirsutus</i>	hairy beardtongue	Upland	X	X	
<i>Phaseolus polystachios</i>	thicket bean	Upland		X	X
<i>Phlox maculata maculata</i>	meadow phlox	Transition		X	X
<i>Phlox paniculata</i>	summer phlox	Upland		X	
<i>Phlox subulata subulata</i>	moss-pink	Upland	X		
<i>Physalis heterophylla</i>	clammy ground cherry	Upland		X	
<i>Podophyllum peltatum</i>	Mayapple	Upland	X		
<i>Pontederia cordata</i>	pickerel-weed	Wetland		X	X
<i>Potentilla canadensis</i>	common cinquefoil	Upland	X	X	

Table 5. Herbaceous Plants Continued

<i>Pycnanthemum incanum</i>	hoary mountainmint	Upland		X	X
<i>Pycnanthemum muticum</i>	clustered mountainmint	Upland		X	X
<i>Pycnanthemum tenuifolium</i>	narrowleaf mountainmint	Transition		X	X
<i>Rubus allegheniensis</i>	common blackberry	Upland	X	X	
<i>Rubus flagellaris</i>	prickly dewberry	Upland	X	X	
<i>Rubus hispidus</i>	swamp dewberry	Wetland		X	
<i>Rubus occidentalis</i>	black raspberry	Upland	X		
<i>Rubus odoratus</i>	purple-flowering raspberry	Upland		X	
<i>Rubus pensilvanicus</i>	Pennsylvania blackberry	Upland	X		
<i>Rudbeckia hirta</i>	black-eyed susan	Upland		X	X
<i>Rudbeckia laciniata</i>	cutleaf coneflower	Transition		X	X
<i>Salvia lyrata</i>	lyre-leaved sage	Upland	X	X	
<i>Scutellaria incana</i>	downy skullcap	Upland		X	
<i>Scutellaria lateriflora</i>	mad-dog skullcap	Upland		X	X
<i>Sedum ternatum</i>	wild stonecrop	Upland	X	X	
<i>Senna hebecarpa</i>	northern wild senna	Upland		X	
<i>Solidago caesia</i>	bluestem goldenrod	Upland		X	X
<i>Solidago juncea</i>	early goldenrod	Upland		X	X
<i>Solidago nemoralis</i>	gray goldenrod	Upland		X	X
<i>Solidago patula</i>	rough-leaved goldenrod	Wetland			X
<i>Solidago speciosa</i>	showy goldenrod	Upland		X	X
<i>Symphotrichum laeve</i>	smooth blue aster	Upland		X	X
<i>Symphotrichum lateriflorum</i>	calico aster	Upland		X	X
<i>Symphotrichum novae-angliae</i>	New England aster	Upland		X	X
<i>Symphotrichum prenanthoides</i>	zigzag aster	Upland		X	X
<i>Thalictrum pubescens</i>	tall meadow-rue	Wetland		X	
<i>Thalictrum thalictroides</i>	rue anemone	Upland	X		
<i>Tiarella cordifolia</i>	foamflower	Upland	X		
<i>Tradescantia virginiana</i>	Virginia spiderwort	Upland	X	X	
<i>Trillium erectum</i>	red or purple trillium	Upland	X		
<i>Trillium undulatum</i>	painted trillium	Transition	X		
<i>Verbena hastata</i>	blue vervain	Wetland		X	
<i>Verbesina alternifolia</i>	wingstem	Transition		X	X
<i>Vernonia noveboracensis</i>	New York ironweed	Wetland		X	X
<i>Veronicastrum virginicum</i>	Culver's root	Upland	X	X	
<i>Viola blanda</i>	sweet white violet	Transition	X		
<i>Viola cucullata</i>	blue marsh violet	Wetland	X	X	
<i>Viola eriocarpa</i>	smooth yellow violet	Upland	X		
<i>Viola sagittata</i>	arrow-leaved violet	Upland	X	X	
<i>Viola sororia</i>	common blue violet	Upland	X		
<i>Zizia aptera</i>	meadow zizia	Upland	X		
<i>Zizia aurea</i>	golden alexanders	Upland	X	X	

Table 5. Shrubs and Trees

Scientific Name	Common Name	Category	Spring Mar-May	Summer Jun-Aug	Fall Sep- Nov
<i>Alnus serrulata</i>	smooth alder	Wetland tall shrub	X		
<i>Amelanchier arborea</i>	downy serviceberry	Upland understory tree	X		
<i>Amelanchier laevis</i>	smooth serviceberry	Upland understory tree	X		
<i>Amorpha fruticosa</i>	false indigo	Transition medium shrub	X	X	
<i>Asimina triloba</i>	pawpaw	Upland understory tree	X		
<i>Photinia melanocarpa</i>	black chokeberry	Upland small shrub	X		
<i>Photinia pyrifolia</i>	red chokeberry	Wetland medium shrub	X		
<i>Ceanothus americanus</i>	New Jersey tea	Upland small shrub		X	
<i>Cephalanthus occidentalis</i>	buttonbush	Wetland medium shrub		X	
<i>Cercis canadensis</i>	redbud	Upland understory tree	X		
<i>Cornus alternifolia</i>	alternate-leaved dogwood	Upland understory tree	X	X	
<i>Cornus racemosa</i>	gray dogwood	Transition medium shrub	X	X	
<i>Corylus cornuta</i>	beaked hazelnut	Upland medium shrub	X		
<i>Crataegus crus-galli</i>	cockspur hawthorn	Upland tree	X		
<i>Epigaea repens</i>	trailing arbutus	Upland low shrub	X		
<i>Gaylussacia baccata</i>	black huckleberry	Upland low shrub	X	X	
<i>Hamamelis virginiana</i>	witch hazel	Upland tall shrub			X
<i>Kalmia latifolia</i>	mountain laurel	Shrub, medium	X		
<i>Lyonia ligustrina</i>	maleberry	Transition medium shrub		X	
<i>Physocarpus opulifolius</i>	ninebark	Transition shrub medium	X	X	
<i>Prunus americana</i>	wild plum	Upland small tree	X		
<i>Prunus pensylvanica</i>	pin cherry	Upland small tree	X		
<i>Prunus serotina</i>	wild black cherry	Upland tree	X	X	
<i>Prunus virginiana</i>	choke cherry	Upland small tree	X		
<i>Rhododendron maximum</i>	rosebay	Upland tall shrub		X	
<i>Rhododendron periclymenoides</i>	pink azalea	Upland medium shrub	X	X	
<i>Ribes americanum</i>	black currant	Upland medium shrub	X		
<i>Salix discolor</i>	pussy willow	Transition medium shrub	X		
<i>Salix nigra</i>	black willow	Wetland tree	X		
<i>Spiraea alba</i>	narrow-leaved meadow-sweet	Wetland low shrub		X	X
<i>Tilia americana</i>	basswood	Upland tree		X	
<i>Vaccinium angustifolium</i>	low sweet blueberry	Upland low shrub	X	X	
<i>Vaccinium corymbosum</i>	highbush blueberry	Wetland medium shrub	X		
<i>Vaccinium macrocarpon</i>	large cranberry	Wetland low shrub		X	
<i>Vaccinium pallidum</i>	lowbush blueberry	Upland low shrub	X	X	
<i>Vaccinium stamineum</i>	deerberry	Upland low shrub	X	X	
<i>Viburnum acerifolium</i>	maple-leaved viburnum	Upland low shrub		X	
<i>Viburnum lentago</i>	nannyberry	Transition medium shrub	X	X	
<i>Viburnum prunifolium</i>	black haw	Upland tall shrub	X	X	
<i>Viburnum recognitum</i>	northern arrowwood	Wetland medium shrub	X	X	

Books and Other Publications

- Allen, T. 1997. The Butterflies of West Virginia and Their Caterpillars. University of Pittsburgh Press, Pittsburgh.
- Donovall, L. and D. VanEngelsdorp. 2010. A Checklist of the Bees (Hymenoptera: Apoidea) of Pennsylvania. Journal of the Kansas Entomological Society 83(1):7-24.
- Holm, H. 2014. Pollinators of Native Plants: Attract, Observe and Identify Pollinators and Beneficial Insects with Native Plants. Pollination Press LLC, Minnetonka, MN.
- Leppo, B., D. Lieb, M. Walsh, N. Welte, P. Woods. 2015. Invertebrate Assessment for the 2015 Pennsylvania Wildlife Action Plan Revision. Final report for State Wildlife Grant F14AF00255 to the Pennsylvania Fish and Boat Commission.
- Monroe, J. and D. Wright. 2017. Butterflies of Pennsylvania: A Field Guide. University of Pittsburgh Press, Pittsburgh, PA. 33pp. [Publication date:28Apr2017].
- Tallamy, D. W. 2009. Bringing Nature Home: How You Can Sustain Wildlife with Native Plants. Timber Press, Portland, Oregon.
- Wagner, David. 2005. Caterpillars of Eastern North America. Princeton University Press, Princeton, New Jersey.

Websites

Pollinator Conservation and Habitat Management

- Attracting Pollinators to Your Garden Using Native Plants
https://www.fs.fed.us/wildflowers/pollinators/documents/AttractingPollinatorsEasternUS_V1.pdf
- Benefitting Pollinators on Pennsylvania State Forest Lands
http://www.dcnr.state.pa.us/cs/groups/public/documents/document/dcnr_20031604.pdf
- Conservation and Management of North American Bumble Bees
<https://www.fs.fed.us/wildflowers/pollinators/documents/ConsMgmtNABumbleBees.pdf>
- Conservation and Management of North American Mason Bees
http://www.natureserve.org/sites/default/files/web_-_natureserve_osmia_report_brochure.pdf
- Conserving Wild Bees in Pennsylvania
<http://extension.psu.edu/publications/uf023>
- Illinois Wildflowers - Insect Visitors of Wildflowers
http://www.illinoiswildflowers.info/flower_insects/index.htm
- Illinois Wildflowers - Plant Feeding Insect Database
http://www.illinoiswildflowers.info/plant_insects/database.html
- Organic Farming Practices – Reducing Harm to Pollinators from Farming
<http://www.xerces.org/wp-content/uploads/2009/12/xerces-organic-farming-practices-factsheet.pdf>

- Pollinator Biology and Habitat
https://www.nrcs.usda.gov/Internet/FSE_PLANTMATERIALS/publications/mipmctn11774.pdf
- Pollinators in Natural Areas: A Primer on Habitat Management
http://www.xerces.org/wp-content/uploads/2014/09/PollinatorsNaturalAreas_June2014_web.pdf
- Pollinator Plants for the Northeast United States
https://www.nrcs.usda.gov/Internet/FSE_DOCUMENTS/nrcs144p2_027028.pdf
- Pollinator Plants for the Great Lakes Region (includes NW half of the state)
http://www.xerces.org/wp-content/uploads/2014/03/GreatLakesPlantList_web.pdf
- Pollinator Plants for the Mid-Atlantic Region (includes SE half of the State)
http://www.xerces.org/wp-content/uploads/2014/09/MidAtlanticPlantList_web.pdf

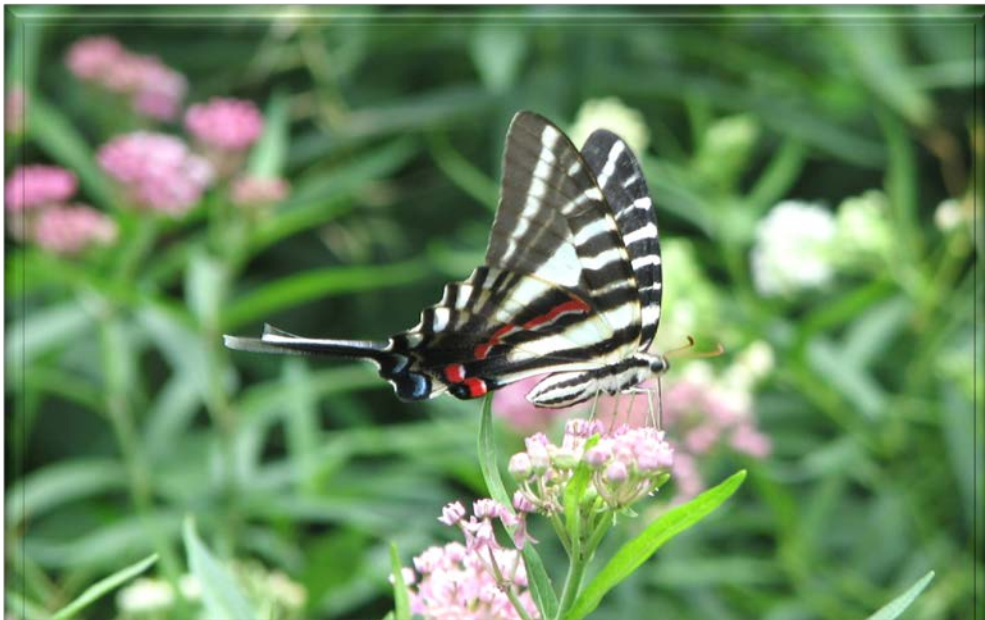
Invasive Plants

- Pennsylvania Invasive Species Website
<http://www.dcnr.state.pa.us/conservationscience/invasivespecies/index.htm>
- Pennsylvania Invasive Species List
http://www.dcnr.state.pa.us/cs/groups/public/documents/document/dcnr_20026634.pdf
- Pennsylvania Invasive Plant Factsheets
<http://www.dcnr.state.pa.us/forestry/plants/invasiveplants/>
- Pennsylvania Invasive Plants of Riparian Areas
<https://www.dep.state.pa.us/dep/deputate/watermgt/wc/subjects/streamreleaf/Docs/Invasive%20Plants.pdf>
- Plant Conservation Alliance Alien Plant Fact Sheets
<http://www.nps.gov/plants/alien/factmain.htm>
- Safe Herbicide Handling in Natural Areas: A Guide for Land and Volunteer Stewards
<http://www.invasive.org/gist/products/library/herbsafe.pdf>
- Upkeep and Maintenance of Herbicide Equipment: A Guide for Natural Area Stewards
(<http://www.invasive.org/gist/products/library/herbupkeep.pdf>)
- Weed Control Methods Handbook: Tools and Techniques for Use in Natural Areas
<http://www.invasive.org/gist/products/handbook/methods-handbook.pdf>

Native Plants

- Illinois Wildflowers – plant descriptions, cultivation notes, and faunal associations
<http://www.illinoiswildflowers.info/index.htm>
 - o [Woodland Wildflowers](#)
 - o [Wetland Wildflowers](#)
 - o [Weedy Wildflowers](#)
 - o [Prairie Wildflowers](#)
 - o [Savanna and thicket Wildflowers](#)

- Landscaping with Native Plants in Pennsylvania
http://www.dcnr.state.pa.us/cs/groups/public/documents/document/DCNR_20031352.pdf
- Native Plant Nurseries
<http://iconservpa.org/plantsmart/nativeplants/buynatives/index.htm>
- Pennsylvania Flora Project
<http://paflora.org/original/>
- Pennsylvania Native Plant Database
<http://www.iconservpa.org/plantsmart/plantsdatabase/index.htm>
- Pennsylvania Native Plant Recommendations
<http://www.iconservpa.org/plantsmart/nativeplants/index.htm>
 - o [Sunny/Moist Conditions](#)
 - o [Shady/Moist Conditions](#)
 - o [Dry Conditions](#)
 - o [Shady/Dry Conditions](#)
- Pennsylvania Native Plant Resources
<http://www.iconservpa.org/plantsmart/nativeplants/resources/index.htm>
- Pennsylvania Native Plant Society
www.pawildflower.org
- Planting and Seeding Guidelines , Pennsylvania Bureau of Forestry
http://dcnr.state.pa.us/cs/groups/public/documents/document/dcnr_20031625.pdf



Zebra swallowtail (*Eurytides marcellus*) adults love to nectar on a variety of flowers, but their caterpillars can only feed on the leaves of pawpaw trees (*Asimina triloba*).

Revised March 9, 2017

Questions/Comments: Contact Betsy Leppo, PA Natural Heritage Program, bleppo@paconserve.org