

Penn State **Extension**

# Pollinator Monitoring

[extension.psu.edu](http://extension.psu.edu)



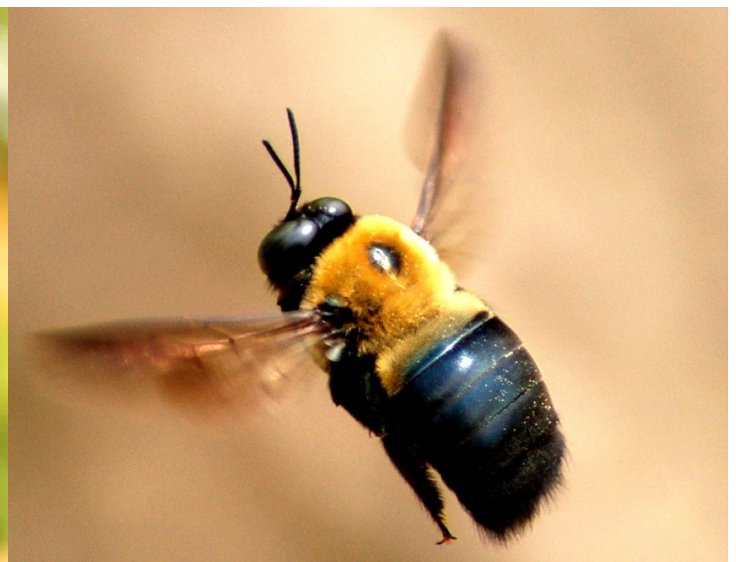
**Honey Bee**



**Bumble Bee**



**Green Metallic Bee**



**Carpenter Bee**

PENNSSTATE



Cooperative Extension  
*College of Agricultural Sciences*



**Leaf Cutter Bee**



**Long Horned Bee**



**Wool Carder Bee**



**Small Carpenter Bee**

An **OUTREACH** program of the  
College of Agricultural Sciences

Penn State College of Agricultural Sciences research and extension programs are funded in part by Pennsylvania counties, the Commonwealth of Pennsylvania, and the U.S. Department of Agriculture. Visit Penn State Extension on the web: [extension.psu.edu](http://extension.psu.edu).

Where trade names appear, no discrimination is intended, and no endorsement by Penn State Cooperative Extension is implied.

Penn State encourages persons with disabilities to participate in its programs and activities. If you anticipate needing any type of accommodation or have questions about the physical access provided, please contact [Name and phone number] in advance of your participation or visit. This publication is available in alternative media on request.

The Pennsylvania State University is committed to the policy that all persons shall have equal access to programs, facilities, admission, and employment without regard to personal characteristics not related to ability, performance, or qualifications as determined by University policy or by state or federal authorities. It is the policy of the University to maintain an academic and work environment free of discrimination, including harassment. The Pennsylvania State University prohibits discrimination and harassment against any person because of age, ancestry, color, disability or handicap, national origin, race, religious creed, sex, sexual orientation, gender identity, or veteran status. Discrimination or harassment against faculty, staff, or students will not be tolerated at The Pennsylvania State University. Direct all inquiries regarding the nondiscrimination policy to the Affirmative Action Director, The Pennsylvania State University, 328 Boucke Building, University Park, PA 16802-5901; Tel 814-865-4700/V, 814-863-1150/TTY.