



Bacterial and Fungal Midgut Community Dynamics and Transfer Between Mother and Brood in the Asian Longhorned Beetle (*Anoplophora glabripennis*), an Invasive Xylophage

Charles J. Mason¹ · Alexander M. Campbell¹ · Erin D. Scully² · Kelli Hoover¹

Received: 29 September 2017 / Accepted: 14 May 2018
© Springer Science+Business Media, LLC, part of Springer Nature 2018

Abstract

Microbial symbionts play pivotal roles in the ecology and physiology of insects feeding in woody plants. Both eukaryotic and bacterial members occur in these systems where they facilitate digestive and nutrient provisioning. The larval gut of the Asian longhorned beetle (*Anoplophora glabripennis*) is associated with a microbial consortium that fulfills these metabolic roles. While members of the community vary in presence and abundance among individuals from different hosts, *A. glabripennis* is consistently associated with a fungus in the *Fusarium solani* species complex (FSSC). We used amplicon sequencing, taxon-specific PCR, culturing, and imaging to determine how bacterial and fungal communities differ between life stages and possible modes of symbiont transfer. The bacterial and fungal communities of adult guts were more diverse than those from larvae and eggs. The communities of larvae and eggs were more similar to those from oviposition sites than from adult female guts. FSSC isolates were not detected in the reproductive tissues of adult females, but were consistently detected on egg surfaces after oviposition and in frass. These results demonstrate that frass can serve as a vehicle of transmission of a subset for the beetle gut microbiota. Vertically transmitted symbionts are often beneficial to their host, warranting subsequent functional studies.

Keywords Bacterial 16S rRNA · Fungal ITS1 · Asian longhorned beetle · *Fusarium solani* · Vertical transmission · Symbiosis

Introduction

Insects have established relationships with a breadth of microbial associates, many of which can provide important functional benefits [1, 2]. Insect-microbial partnerships can vary considerably, both in terms of the functions they serve [1] and the evolutionary relationships they possess [3, 4]. For several groups of insects, the maintenance of symbionts via vertical,

maternal transfer is critical for herbivore success. Maternal transfer of microbiota requires physiological and/or behavioral adaptations to facilitate passage of symbionts and become fixed among individuals and in populations [5]. Maternal microbiota transfer occurs via a diversity of mechanisms, including intracellularly, capsules [6, 7], secretions [8], and excretions [9]. In addition to maternal transfer, there can be environmental acquisition of microbes by insects from food or soil [10, 11], which can have benefits to insect performance and success. Maternal and environmental acquisitions can be intersecting processes, particularly for associations with the insect gut and externally propagated symbionts.

Subcortical phloem and wood feeding occur in several insect orders, and associations with both bacterial and fungal consortia are well known [12–15]. Phloem and wood-feeding insects encounter low nutritive and heavily defended dietary substrates. In these systems, microbial partners can fulfill roles in nutrient provisioning [16–19], toxin metabolism [20–22], and defense against antagonistic microbiota [23–27]. Microbes may inhabit insect gut tissues or be externally propagated in the wood during the excavation of feeding galleries

Electronic supplementary material The online version of this article (<https://doi.org/10.1007/s00248-018-1205-1>) contains supplementary material, which is available to authorized users.

✉ Charles J. Mason
cjm360@psu.edu

¹ Department of Entomology and Center for Chemical Ecology, The Pennsylvania State University, University Park, State College, PA 16823, USA

² Stored Product Insect and Engineering Research Unit, USDA, Agricultural Research Service, Center for Grain and Animal Health Research, Manhattan, KS 66502, USA

[28]. While several studies have investigated bacterial communities of subcortical insects [18, 22, 23, 28–32], the mechanism of transfer of these microbes is unclear in most systems. The filamentous fungal associates in these systems have received more attention in xylophagous insects [13, 14, 33, 34]. Adults of some bark and ambrosia beetles and wood wasp species have specialized structures called mycangia that harbor fungal spores that are inoculated into brood feeding sites [35]. Some bark beetle species lack these structures, but adults carry spores on their cuticle, distributing inoculum as it carves the gallery. When spores are present on the cuticle, the fidelity of the insect-microbe association is lower compared to those adapted to mycangia [36–39]. For other subcortical-feeding insects like cerambycids that only spend the larval and pupal stages inside the host tree, the community dynamics and transfer of both fungal and bacterial members remain unclear.

The Asian longhorned beetle, *Anoplophora glabripennis* (Motschulsky) (Coleoptera: Cerambycidae), is an invasive xylophage that attacks and kills healthy trees [40, 41]. *A. glabripennis* has a broad host range that includes species in the genera *Acer*, *Betula*, *Salix*, *Aesculus*, *Ulmus*, and *Populus* [40–42]. Larvae feed solitarily beneath the bark along the phloem–cambium interface in the early instars before boring into and feeding on the heartwood. Adults feed primarily on bark and phloem of 2–3-year-old twigs and leaf petioles.

The *A. glabripennis* larval gut harbors a diversity of bacteria and fungi that have putative roles in nutrient provisioning, lignocellulose metabolism, and allelochemical metabolism [43–47]. Bacterial community composition varies between populations and food sources, but appears to perform similar functional roles [44, 45, 48]. Fungal members of the consortia can also vary, but are usually comprised of yeasts and a filamentous fungus in the *Fusarium solani* species complex (FSSC) [49, 50]. Adult *A. glabripennis* do not contain mycangia-like structures as seen in some bark beetles and wood wasps, nor do they have mycetomes that are present in some cerambycids [51]. In this system, it is unclear how the communities of bacterial and fungal symbionts are acquired, although some bacteria appear to be transferred vertically [52].

In contrast to *A. glabripennis* eggs and larvae that spend the full duration of their development in subcortical tissues, adults feed entirely outside of the tree and do not re-enter the tree to reproduce. *A. glabripennis* females undergo a laborious, multistep egg-laying behavior (Fig. 1) during which she deposits a single egg beneath the bark of the tree. During oviposition behavior, which lasts on average 10–12 min [53], the female chews through the bark of the tree to form an opening to the vascular tissue, and then uses her ovipositor to excavate an egg-laying site (hereafter referred to as an oviposition pit). They deposit secretions and a single egg under the bark and then proceeds to deposit frass into the oviposition pit, spreading both materials over the surface of the exposed wood. This

behavior is similar to that of other wood-colonizing cerambycids in the Lamiinae subfamily [54]. We hypothesize that the final step of this behavior transfers and facilitates the colonization of microbiota onto the egg surface, which is subsequently transferred to the larval gut when the newly eclosed larva consumes the chorion of the egg and grazes on the colonized wood in the oviposition pit before boring into the tree.

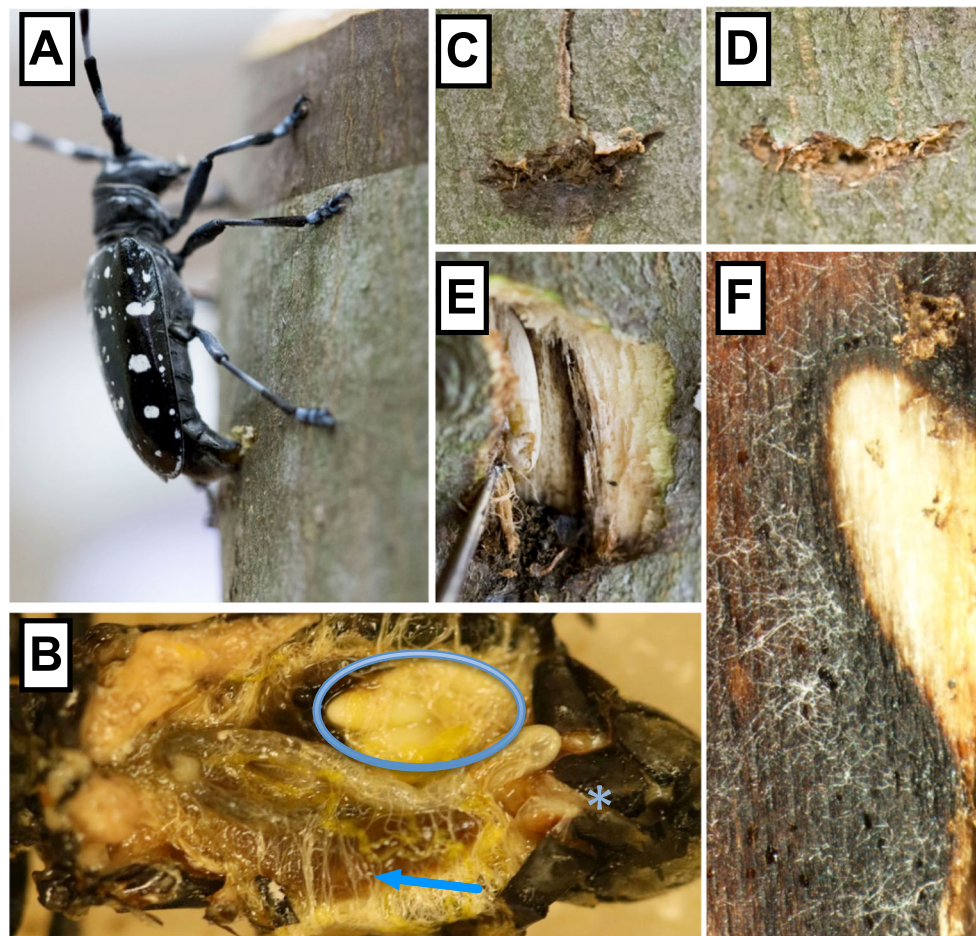
In this study, we utilized high-throughput 16S and ITS sequencing, taxon-specific PCR, and selective media culturing to assess community and population dynamics of fungal and bacterial communities between different *A. glabripennis* life stages to investigate the stability and potential vertical transfer of the microbial consortia from mother to offspring.

Materials and Methods

Description of Insect Source We used *A. glabripennis* maintained in a colony in the Department of Entomology at the Pennsylvania State University (PSU) for our study. This colony has been maintained for approximately 10 years and has had regular introductions of wild beetles from North America to maintain genetic diversity. The colony is reared in isolation using standard procedures that include two diets suitable for different life stages [43, 55] at 22 °C, ~60% humidity, and an 14:10-h light dark photoperiod. *A. glabripennis* adults are fed on red maple (*Acer rubrum*) twigs for 10–14 days to reach sexual maturity and are provided with red maple bolts for oviposition. Insects from this colony undergo similar mating and feeding behaviors as those observed in the field (Supplemental Video 2). *A. glabripennis* larvae feed in maple bolts up to the second instar before being transferred to artificial diet until pupation [55]. For our study, analyses were conducted using adults that fed exclusively on red maple, and larvae that were harvested from red maple and immediately dissected.

Sampling Scheme for Microbial Community Profiling In order to profile fungal and bacterial communities across the life stages of *A. glabripennis*, we collected eggs, adult female frass, oviposition secretions, and larval and adult male and female midguts ($n = 6$ per sample type). We provided male and female mating pairs with red maple twigs and a bolt of red maple for feeding and oviposition, respectively, and monitored oviposition over a 2-week interval. From the oviposition pits, we collected secretions deposited by females during oviposition, which also contained frass (Fig. 1). Eggs were collected from oviposition pits 2 weeks following oviposition using flame-sterilized forceps. Larvae were collected from oviposition bolts 3 weeks after the first appearance of frass (~6 weeks post-oviposition) and were anesthetized on ice, surface sterilized, and dissected to remove the midgut as described previously [56]. Larvae were early second instars,

Fig. 1 Oviposition behavior, female gut, and oviposition pits of *A. glabripennis*. After chewing a slit into the bark, the female inserts ovipositor under bark (a). Ovipositor is normally tucked in abdomen between gut tissues (b). In b, the arrow points to anterior midgut, circle indicates ovaries, and the asterisk is at the base of the ovipositor. After laying a single egg, she defecates into oviposition pit (c). Oviposition pits are easily distinguished from chew marks not containing eggs (d) due to crack in bark and deposition of frass. Deposited frass is not immediately applied to egg tissue, but rather there is ~1-mm distance from where frass is packed and from where the egg is laid (e). Hyphae begin to accumulate in the pit ~1 week after oviposition, surrounding and covering the egg and growing on wood (f). Video of *A. glabripennis* oviposition is available in online supplement



~1 cm long at the time of dissection, and had a full gut. We separated the male and female pairs into separate jars to collect frass from females only. After the collection of frass, oviposition secretions, and eggs, each adult was dissected to remove the midgut. We selected only midgut tissues since no differences between midgut and hindgut were observed previously [56]. Prior to dissection of gut tissues, adult males and females were anesthetized by holding them at -20°C for 3–4 min and then surface sterilizing them. Legs and elytra were removed from the adults and midguts were removed by dorsal dissection. Newly eclosed females ($n = 3$) were also dissected using the same method. After all samples were collected, the tissues were then flash frozen in liquid N_2 and stored at -80°C until subsequent processing.

Extraction of DNA DNA was extracted from midgut tissue sections using a ZR Fecal DNA MiniPrep Kit (Zymo Research, Irvine, CA, USA). Frozen tissues were immediately submerged in the kit's lysis buffer and homogenized with bead beating at 600 rpm for 3 min in a Genogrinder 2000 (SPEX Sampleprep, Metuchen, NJ, USA). All other steps followed manufacturer protocols, except six volumes of fecal DNA binding buffer were added instead of three volumes.

Generation and Sequencing of Fungal and Bacterial Amplicons

We generated bacterial and fungal amplicon pools for sequencing using the following Earth Microbiome Project protocols. Primers used for bacterial V4 16S-rRNA amplification were 515F and 806R [57]. Primers used for fungal ITS1 amplification were ITS1f [58] and ITS2 [59]. Amplicons were generated in 20 μL volumes using 5 PRIME Hotstart mastermix (Gaithersburg, MD, USA) containing 1.0 μM of forward and reverse primers and 12.5 ng of template DNA. Reaction conditions for 16S amplification were 94°C for 3 min, 23 cycles of 94°C for 45 s, 50°C for 60 s, and 72°C for 90 s, followed by a final extension of 72°C for 10 min. ITS1 amplification followed similar procedures, with an annealing temperature of 55°C and 35 PCR cycles. Dual indices and Illumina sequencing adapters were added to amplicon pools with eight additional cycles of PCR. Amplicon pools were pooled and sequenced on Illumina MiSeq using $2 \times 250\text{-bp}$ paired end reads. Generation of amplicon pools and sequencing of products was completed by AKESOGEn Inc. (Norcross, GA, USA).

Processing of Sequencing Data

Bacterial and fungal sequencing data were processed and analyzed using mothur v.1.37 [60] and PIPITS v.1.3.3 [61], respectively. 16S-rRNA reads

were analyzed in mothur using recommended workflows [62]. One modification was made to the recommended curation workflow in that the mothur command “pcr.seqs” with $\text{pdiffs} = 2$ was implemented after the command “make.contigs” to remove primer sequences from the reads (Supplemental Methods). Bacterial OTUs were picked at 97% dissimilarity with the optclust method and used for subsequent analyses. PIPITS was used following recommended pipeline procedures with no modifications. Fungal phylotypes generated by PIPITS were used for subsequent analyses. We used mothur to conduct OTU subsampling (3000 reads) and calculation of diversity metrics.

qPCR of *F. solani* in Guts

We used primers described previously [56] to conduct qPCR to enumerate copies of the FSSC symbiont in the adult female gut, frass, oviposition secretions, and larval guts. Primers targeting *A. glabripennis*'s FSSC translation elongation factor 1 alpha (TEF) gene were used to test for the presence of FSSC. A primer set targeting *A. glabripennis* β -tubulin 2 served as an endogenous control. qPCR was conducted using the Bio-Rad CFX96 Touch Real-Time PCR Detection System (Hercules, CA, USA) under conditions described previously [56]. Each 10 μL reaction was conducted in triplicate and contained 5 μL of iTaq Universal SYBR Green Supermix buffer (Bio-Rad), 200 nM of forward and reverse primer, and 5 ng of template DNA. Copies of FSSC TEF were calculated from a standard curve containing linearized plasmid DNA.

Background Presence of *F. solani* and Culturable Microbes in Maple To determine if FSSC (e.g., endophytic) was present in the wood used to rear beetles prior to oviposition by females, we attempted to detect FSSC in the oviposition logs. We selected five mated pairs of *A. glabripennis* and collected phloem from oviposition pits that contained eggs 1 week after oviposition. Phloem samples immediately adjacent to the pit were also collected. The oviposition pit and adjacent wood samples were freeze dried and DNA was extracted using protocols described above. We amplified TEF using the same primers described above for qPCR, and we also amplified a maple ribulose-biphosphate carboxylase gene to confirm that any negative amplification was not due to inhibitors [63]. End point PCR was conducted using GoTaq master mix (Promega, Madison, WI, USA) in 25 μL volumes containing 750 nM of forward and reverse primers and 40 ng of DNA.

In order to estimate background microbial titers, we randomly selected three females and used dilution plating to compare differences between frass and phloem. We assessed differences in culturable microbes between phloem and female frass by collecting frass immediately upon excretion and carefully carving away phloem from maple bolts. Samples were

homogenized in phosphate-buffered saline and serial dilutions were plated on yeast-tryptone medium.

Investigation of Transovarial Presence of FSSC and Bacteria

In order to assess the involvement of reproductive tissues in vertical transmission of fungal symbionts, we attempted to culture FSSC from *A. glabripennis* eggs and ovaries. For these experiments, we used Nash-Snyder media, which is selective for FSSC [64]. We collected eggs and ovaries from mated females following dissection, homogenized them, and placed them on growth media. To determine if microbes are transmitted on the egg surface, we removed eggs from oviposition pits and either surface sterilized them by rinsing in 10% Coverage Plus followed by a sterile water rinse, or rinsing them with sterile water only (positive control). Eggs were rolled onto media with sterile forceps and transferred to filter paper on top of 1.5% water agar for hatching. The resultant neonate larvae were then homogenized and plated onto Nash-Snyder media. We also tested for the presence of culturable bacteria associated with the ovaries, eggs at 2 weeks post-oviposition, surface sterilized eggs, and larvae by plating homogenized samples on yeast-tryptone media.

SEM Imaging of Eggs To determine if fungal mycelia were visible on egg surfaces following oviposition, *A. glabripennis* eggs were removed from red maple bolts 2 weeks post-oviposition. Eggs were immediately submerged in 4% paraformaldehyde fixative and incubated at room temperature for 24 h. Each egg was serially dehydrated in ethanol and then critical point dried using a Leica EM CPD300 Critical Point Dryer (Leica Camera, Wetzlar, Germany). Tissues were imaged on a Zeiss SIGMA-VP FESEM (Carl Zeiss AG, Oberkochen, Germany). Sample preparation and imaging were conducted at the PSU Microscopy and Cytometry Facility.

Statistical Analyses To determine if there were differences in microbial communities across life stages and tissue types, we used insect life stage as an explanatory variable and the adult pairing as a random effect in the model. Univariate analysis of variance (ANOVA) statistics were conducted using R v.3.3.1 [65]. Mixed effect models were produced with the package lme4 [66]. Contrasts were made using lsmeans with a Tukey's HSD adjustment. Bray-Curtis dissimilarities were generated using subsampled data incorporating relative abundance of OTUs, and Jaccard dissimilarities were generated using subsampled data incorporating presence-absence. Bray-Curtis dissimilarities are used to evaluate community structure, and Jaccard dissimilarities for community composition. Non-metric multidimensional scaling (nMDS) was conducted in PRIMER-E (v.7.0) using these dissimilarities. A permutation-based multivariate analysis of variance (PERMANOVA) was also conducted in PRIMER-E using 1000 iterations of the model [67]. In order to assess differences in OTUs between

A. glabripennis adults, eggs, and larvae, heat maps were generated using log₂-transformed relative abundances of the most abundant OTUs. The 30 most abundant were selected for the bacterial OTUs, and the 20 most abundant were selected for the fungi. Student's *t* tests were used to compare qPCR results between newly eclosed and mature adult beetles.

Results

Community Composition and Structure Changes Across *A. glabripennis* Life Stages

Bacterial and fungal OTU richness and diversity varied across *A. glabripennis* life stages and sample types (Table 1). Adult female guts, as well as frass and secretions deposited into the oviposition pits, had comparable numbers of bacterial OTUs. Adult male guts had fewer bacterial OTUs than females, while eggs and larvae had the fewest OTUs overall. Female frass and guts of males, females, and larvae had comparable Shannon and inverse Simpson metrics. Oviposition pits and eggs had significantly lower diversity in comparison to adult guts and frass and larval guts. Fungal diversity and richness followed similar trends among tissue types as the bacterial communities (Table 1).

Ordination analyses and PERMANOVA of bacterial and fungal communities indicated large differences between sample types (Fig. 2; Supplemental Table 2). Neither bacterial nor fungal communities (Fig. 2a, c) differed between female guts and frass. The bacterial communities in oviposition secretions also did not differ from those in frass. Larval bacterial community structure was most similar to the adult female guts (Fig. 2a), while the larval fungal community structure was most similar to egg surfaces (Fig. 2c). Bacterial compositions of the eggs and larvae were clearly differentiated from those associated with adults, frass, and oviposition secretions (Fig. 2b). Likewise, the fungal compositions of eggs and larvae were clearly differentiated from the adult beetles and frass

(Fig. 2d), while fungal community compositions of oviposition pit secretions were of intermediate similarity to other sample types (Fig. 2d). Adult males and females had similar bacterial and fungal compositions and fungal community structures, but differed significantly in their bacterial community structure (Supplemental Table 3).

At a relatively coarse taxonomic resolution, differences between bacterial and fungal communities across *A. glabripennis* life stages were apparent (Fig. 3). Across all samples, the highest proportion of the bacterial community at the class level was Gammaproteobacteria. Differences in bacterial class designation between life stages were primarily attributed to minor shifts in the relative abundances of Gammaproteobacteria, Alphaproteobacteria, and Betaproteobacteria. Fungal taxonomic differences among sample types were more pronounced compared to the differences observed in bacterial taxonomic composition. In adult female guts, there were more unclassified fungal OTUs and Ascomycetes at the class level compared to other samples, while Saccharomycetes, Eurotiomycetes, and Dothideomycetes comprised between 7.4 and 8.5% of the relative abundance and Sordariomycetes made up less than 1% of the relative abundance. Oviposition pit depositions exhibited a considerable shift in fungal taxonomic composition compared to adult female guts and were dominated by Saccharomycetes (~78%). The relative abundances of Sordariomycetes in both eggs and larval guts were significantly higher (49–55%) compared to the female gut, frass, and oviposition secretions.

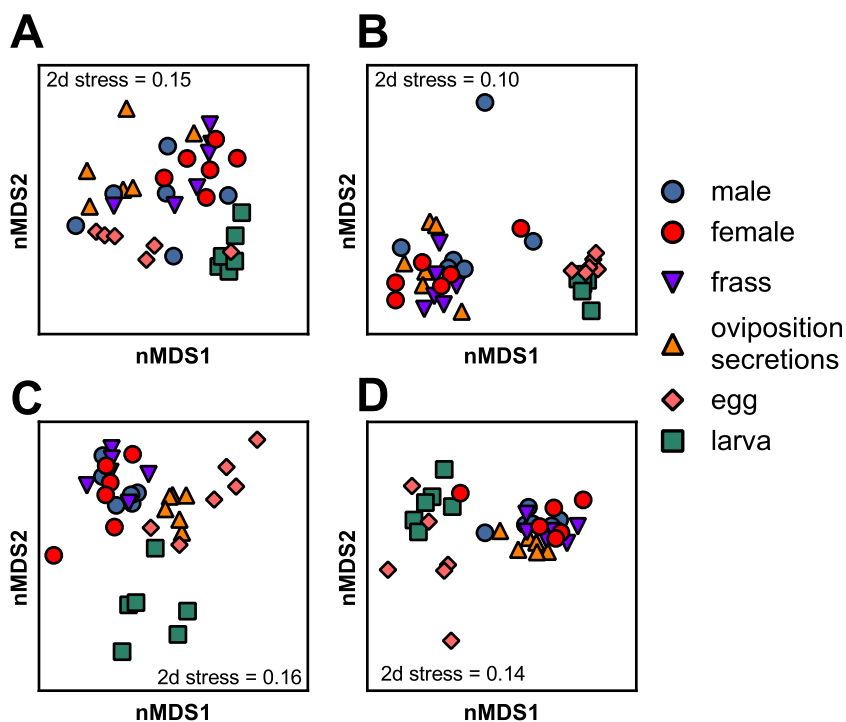
Heat maps of fungal and bacterial OTUs between females, eggs, and larvae (Fig. 4) led to the identification of several bacterial and fungal OTUs shared among multiple life stages that serve as strong candidates for vertical transmission. For example, bacterial OTUs 1–6 and 10–14 were detected in the majority of the adults, eggs, and larvae surveyed. Other OTUs were exclusively associated with adult beetles (OTU047, OTU063, and OTU087) while two OTUs were associated exclusively with eggs and larvae. In contrast to the bacterial OTUs, fewer fungal candidates were shared among multiple life stages. Nine fungal OTUs were present in all three stages,

Table 1 Observed OTUs and diversity indices of bacterial and fungal sequences in different *A. glabripennis* life stages

	Male gut	Female gut	Frass	Oviposition pit	Egg	Larval gut	<i>F</i> value (<i>df</i> = 5, 25)	<i>p</i> value
Bacteria								
Number of OTUs	124.2 (23.5) ab	206.8 (32.9) bc	257.0 (42.3) c	202.8 (27.8) c	61.2 (4.0) a	100.2 (12.8) ab	7.70	< 0.01
Shannon	2.5 (0.6) a	3.2 (0.5) a	3.1 (0.5) a	1.9 (0.2) ab	1.6 (0.5) b	3.6 (0.1) a	3.78	0.01
1/Simpson	10.1 (5.0) a	9.3 (2.10) a	13.1 (5.7) a	2.4 (0.3) b	4.7 (2.6) b	21.2 (1.9) a	11.10	0.01
Fungi								
Number of OTUs	40.8 (5.4) ab	45.0 (6.0) ab	59.2 (5.9) a	43.8 (6.5) bc	11.8 (1.7) c	24.5 (2.4) bc	11.15	< 0.01
Shannon	1.9 (0.1) a	1.8 (0.2) a	2.1 (0.2) a	1.6 (0.2) a	0.7 (0.2) b	1.9 (0.3) a	6.69	< 0.01
1/Simpson	4.0 (0.3)	3.7 (0.7)	4.7 (1.1)	3.4 (0.5)	1.7 (0.4)	5.4 (1.4)	2.32	0.07

Numbers represent mean (standard error) and different letters represent statistically significant differences (*p* < 0.05)

Fig. 2 Nonmetric multidimensional scaling plots of bacterial (a, b) and fungal (c, d) communities. a, c were generated using Bray-Curtis (relative abundance) dissimilarities to assess community structures; b, d were generated using Jaccard (presence-absence) dissimilarities to assess community composition. Stress values indicate the ease by which the data were collapsed into two dimensions. PERMANOVA and pair-wise comparisons between sample types are illustrated in Supplemental Tables 1 and 2

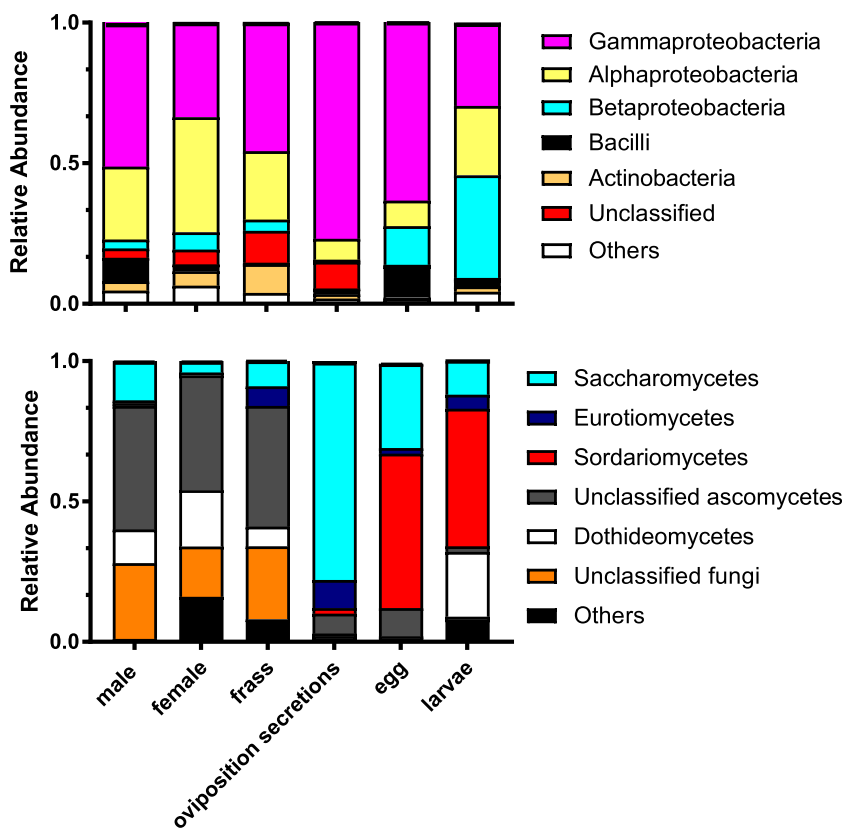


but their abundances varied both across and within life stages. We did not detect high abundances of OTUs classified as FSSC in the amplicon dataset due to low abundance, so we utilized other taxon-specific methods to evaluate its transfer.

FSSC Isolate Transfer to Offspring

We used a primer set selective for the FSSC to detect this symbiont in tree phloem at the time of egg oviposition and

Fig. 3 Relative abundance of taxonomic community at the class level. Top chart includes bacterial members and bottom chart contains fungal members. “Others” are taxa that comprise < 1.0% of the relative abundance



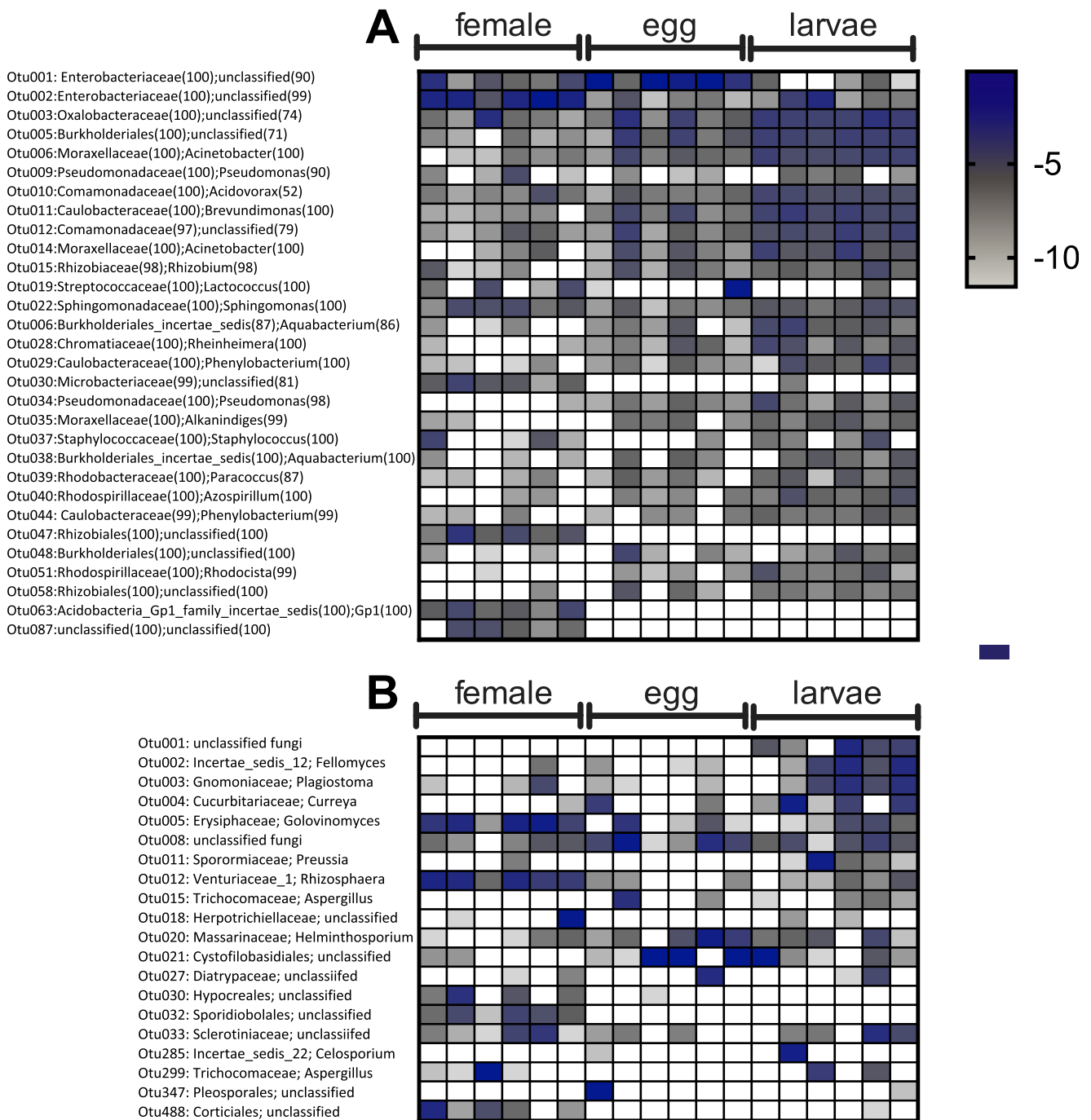


Fig. 4 Heat map of abundant bacterial (a) and fungal (b) OTUs. OTUs included are the 30 and 20 most abundant. Heat map was generated with log₂-transformed relative abundances. Darker blue cells are indicative of greater abundance. White cells indicate no taxa present

in host insect tissues. FSSC isolates were not detected in red maple phloem tissues that did not contain eggs (0/5) (Fig. 4a). The lack of TEF amplification was not due to poor amplification of the DNA because all tissue samples were positive for the maple housekeeper gene. FSSC isolates were detected in 80% of oviposition pits at 1 week post-oviposition. FSSC isolates were also consistently detected in female adult guts, frass, oviposition pits, and larval guts (Supplemental Fig. 1). In female adult guts, FSSC was present in actively feeding

females, as well as those that had recently eclosed from pupae (Fig. 5b). Actively feeding females had significantly higher titers of FSSC-specific copies than those that had not yet undergone plant maturation feeding (Fig. 5).

When eggs were removed from the ovaries prior to oviposition, no FSSC or other microbiota were detected. Plating of dissected female tissues other than from the gut did not yield any microbial growth, suggesting that the symbionts are not delivered via accessory glands or from the oviducts. FSSC was

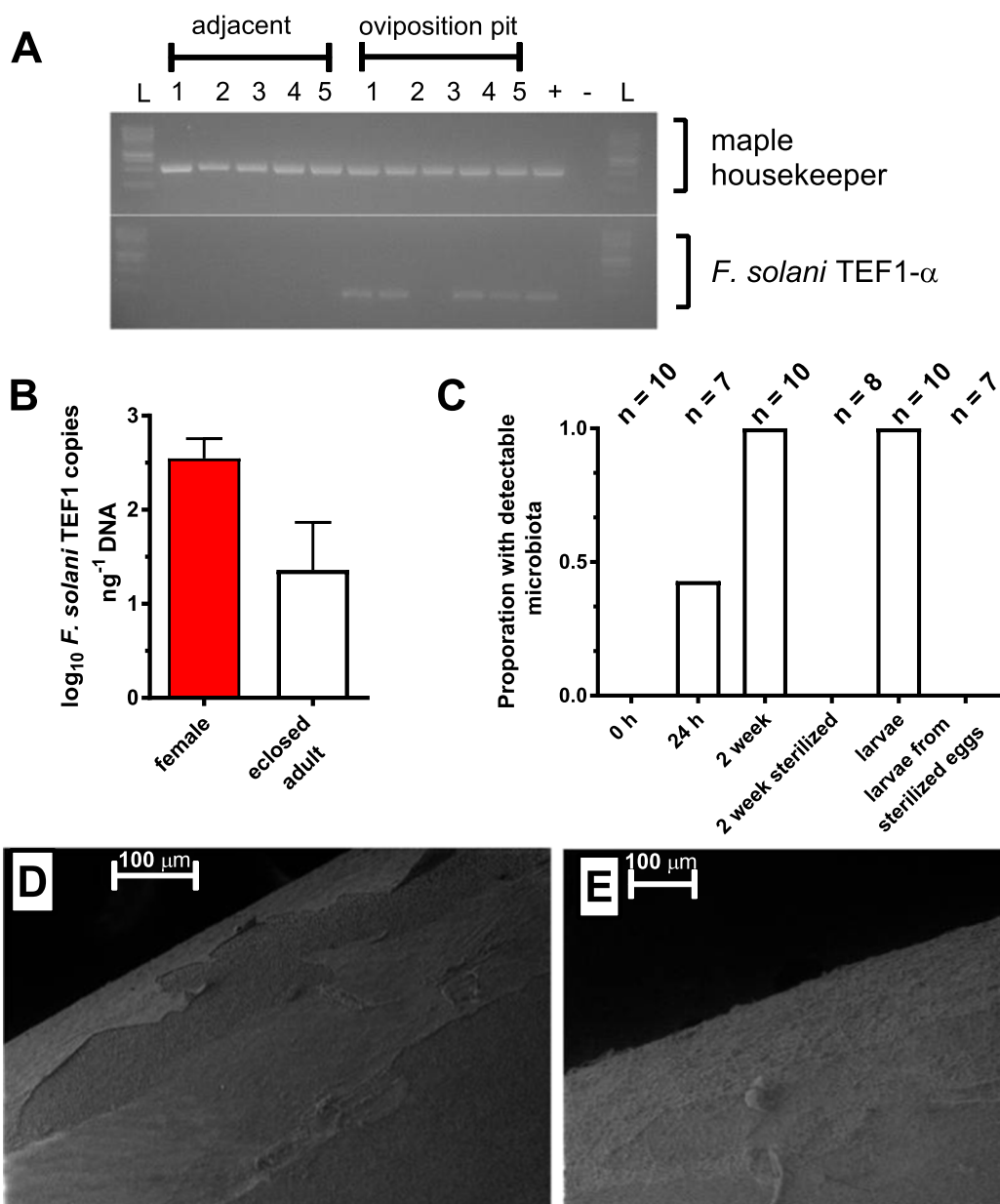


Fig. 5 Dynamics and colonization of eggs and larvae by microbiota. FSSC isolates assessed by endpoint PCR were detected in oviposition pits, but not in immediately adjacent phloem tissue (a). FSSC-specific TEF1 was detected in newly eclosed adults, but copy numbers were greater in guts of actively feeding females (b). Culturable bacteria and fungi were not detected in female reproductive tissues or immediately

after an egg was deposited into wood; FSSC was consistently found in oviposition sites and egg surfaces 2 weeks post-oviposition (c). Surface sterilizing eggs removed all culturable microbes, and larvae that hatched from sterilized eggs did not contain microbiota. SEM imaging of eggs immediately after oviposition (d) and 2 weeks post-oviposition (e)

only detected on the external surface of eggs and was consistently detected 1 week post-oviposition or later (Fig. 5c). SEM imaging indicated a progression of fungal colonization of the egg, with no detectable spores or hyphae when eggs were initially deposited, but near-complete coverage of the egg surface within 2 weeks (Fig. 5d, e). Sterilizing the egg surface produced larvae that did not have any culturable microbiota in their gut compared to water-rinsed controls, suggesting that consumption of the chorion and oviposition pit wood surfaces upon larval emergence facilitates microbial colonization of the

gut. The titers of culturable microbes in female frass were more than two orders of magnitude greater compared to that of phloem in the oviposition pit (Supplemental Fig. 2).

Discussion

Our results suggest that there is a transfer of both bacterial and fungal symbionts from mother to offspring. The mechanism of this transfer occurs via frass deposited in oviposition sites,

and the accumulation of symbionts by external growth of these taxa onto the egg chorion and wood surface of the oviposition pit. Our data suggest that there is also environmental acquisition of microbiota by the adults. Adults had greater gut microbial titers compared to that of larvae, suggesting that between life stages, there are both restrictions in colonization as well as expansions. Not all members of the maternal community successfully colonized the guts of the brood, suggesting that some adult microbiota are transients or are not able to colonize the larval gut, colonize the wood, may be outcompeted, or a combination. Adult acquisition of microbes from food and low transfer fidelity of some of the microbial members helps explain some of the variation observed between *A. glabripennis* populations reported in different studies [43–45, 56, 68].

A subset of both bacterial and fungal taxa were detected on egg surfaces and in adult and larval guts, suggesting transfer of a portion of the microbes associated with adults. The female gut, frass, and oviposition secretions had greater bacterial and fungal diversity in comparison to eggs or the larval gut, with eggs being the least diverse. Eggs are deposited under the bark during oviposition and larvae feed exclusively inside the tree, while the oviposition pits are exposed continuously to the external environment. Differences in the microbial community between the oviposition secretions and what colonizes the brood are likely due to differential colonization of microbes in the oviposition pit. Acquisition of environmental microbes may be more variable in egg and larval communities, because, in general, microbial titers in phloem tend to be lower than on bark or foliage (Supplemental Fig. 2) [69].

Differences between female and larval gut microbial communities may be the result of several, non-mutually exclusive processes. First, some microbiota may be more effective colonizers of the oviposition pit and establish in the gut tissues. Conversely, there may be microbiota that are unable to colonize the woody substrate, perhaps due to inhibition from plant defenses. In addition, there is likely competition between bacterial and fungal taxa during egg and larval colonization by some microbes. For example, *Fusarium* spp. commonly produce toxic secondary metabolites that can have anti-bacterial and anti-fungal activities [70–72]. However, some bacterial and fungal OTUs were detected in larvae but not adults (Fig. 4), suggesting that some taxa may be acquired during larval feeding, or lost during pupation.

A. glabripennis-microbe interactions appear to be intermediate in comparison with the general trends observed between two insect-herbivore feeding ecologies. Folivorous insects tend to have variable bacterial gut communities, with ingested microbiota providing a greater diversity of associates than are acquired from vertical transmission [73–76]. This variability contrasts with insects that feed exclusively under bark, which appear to have greater similarities among individuals in their

gut bacterial communities [31, 77], indicative of less dynamic communities relative to folivores. Similarly, this variability differs from social wood-feeders whose communities are more consistent due to trophallaxis behaviors that facilitate microbial stability among conspecifics [78, 79]. Folivores and subcortical feeders have different strategies to contend with their substrates, which likely reflect these differences in these microbial associations. Folivores can modulate consumption to accommodate more or less favorable food sources and move between resources to achieve adequate nutrition. In contrast, subcortical feeders cannot move between hosts and generally encounter greater nutritional constraints. *A. glabripennis* encounters different dietary substrates, and therefore nutritional constraints, between life stages which seem to explain these trends.

In addition to ubiquitous associations with bacteria, wood-feeding insects often have associations with eukaryotic partners. Many of the fungal taxa detected in the adult tissues in our study were not present in larvae, suggesting that many of them are transient, or at least do not occupy integral roles in the larval gut. Some of the fungal OTUs detected in adult gut and frass, like *Aspergillus* and *Trichoderma*, are detrimental and/or antagonistic to insects and microbes in bark beetle systems [23, 27], though their roles in *A. glabripennis* are undefined. In contrast, the filamentous fungus FSSC is consistently associated with *A. glabripennis* [45, 50], and yeast-like microbes commonly populate the gut [45]. The frass component of the oviposition behavior, the presence of FSSC in the oviposition pits but not nearby tissues, and the consistent detection of FSSC across studies in space and time suggest that this fungus plays an important role in the life history of *A. glabripennis*. Members of the FSSC are widely distributed, and FSSC mutualisms have been reported in several species of wood-feeding insects [80, 81]. These results are not due to artifacts from our laboratory colony, as FSSC isolates and/or sequences have been detected in multiple independent studies from the field [44, 45, 50, 56]. We did not observe FSSC in any nearby phloem tissue, but did detect it in 80% of oviposition pits. We suspect that there was not 100% detection because of low FSSC biomass in some oviposition pits. To our knowledge, the transmission behavior that ensures transfer of FSSC from mother to offspring occurs throughout the geographic range of the insect. However, the specific members of the FSSC present in a population appear to depend on geographic location (Campbell et al. unpublished data), suggesting that some population-specific assemblages may be present.

Laboratory-reared insects often differ in their gut community composition to those collected in the field [82, 83]. In past studies of *A. glabripennis* feeding on artificial diets in the laboratory, beetles had very simple microbial communities, dominated by Bacilli. Our study shows a level of bacterial diversity similar to some of the studies previously published (Supplemental Table 1), although the makeup can differ

substantially [44, 52]. These differences and the variability observed between laboratory and field populations may arise from maternal feeding and acquisition of environmental bacteria. Supporting this notion is that the females exhibited the greatest diversity of bacteria in all sample types, which could then be passed to offspring. This seems like a relatively stochastic process, but it also appears that different microbes can fulfill similar functions in this system [44, 45]. Notably, there is high variability of bacterial symbionts between different field populations, and this may be partially related to the acquisition and transfer process. The host plant appears to be a second driver of variation of the gut microbial community, which is may be related to which microbes are present, the chemistry of the plant host, and/or their interactions. It is unclear if the fungi follow similar patterns as the bacteria, but warrants further exploration.

A limitation we face in the interpretation of our study involves the maintenance of microbiota throughout *A. glabripennis* development, particularly during adult eclosion. While our study supports a mechanism of microbial transfer from adult to brood, it is unclear how the microbiota is recovered during adult eclosion and what interactions occur between resident bacteria from newly eclosed adults and the newly acquired environmental microbiota from food. We were able to detect FSSC in newly eclosed adult guts, suggesting some maintenance of associates despite feeding on artificial diets. Assessing the microbial dynamics through larval development and pupation in wood are important steps to identify community members that contribute important functional roles.

Transfer to and maintenance of microbiota in subsequent generations can provide insights into the evolutionary ecology of a species, and ultimately highlight the physiological importance of these associates. External growth and accumulation of fungal associates in the oviposition pits may provide a source of nitrogen, sterols, and pre-digested wood for the newly eclosed larva. Assessment of the nutritional and chemical changes in the oviposition pit would provide insights into these potential resources. In contrast to bark and ambrosia beetles (Coleoptera: Curculionidae), fungi are not propagated in the larval galleries of *A. glabripennis* and the only occurrence of visible fungal growth is in the oviposition pit. While putative roles of both bacterial and fungal members in the *A. glabripennis* larval gut have been proposed based on metagenomic and transcriptomic analyses of the gut community [45, 47, 48, 84], quantification of fitness effects by these taxa have not been addressed. Studies manipulating members of the gut microbiota can help identify contributions of different microbial members to nutrient provisioning, metabolic flexibility of bacterial associates, and roles of FSSC in lignocellulose degradation and nutrient acquisition [84, 85]. Together, this information will expand our understanding of how wood feeders utilize microbial partners and contend with challenging substrates.

Acknowledgements We would like to thank David Long and Francine McCullough for the *A. glabripennis* colony maintenance and Cristina Rosa for the qPCR machine access. We would also like to thank Jon Cantolina at the PSU Microscopy and Cytometry Facility for the assistance in image collection. Funding was provided by USDA-NIFA Grant 2015-67013-23287 and the Alphawood Foundation. This manuscript was improved by constructive comments from two anonymous referees. The US Department of Agriculture, Agricultural Research Service, is an equal opportunity/affirmative action employer, and all agency services are available without discrimination. Mention of commercial products and organizations in this manuscript is solely to provide specific information. It does not constitute endorsement by USDA-ARS over other products and organizations not mentioned.

References

1. Douglas AE (2015) Multiorganismal insects: diversity and function of resident microorganisms. *Annu Rev Entomol* 60:17–34. <https://doi.org/10.1146/annurev-ento-010814-020822>
2. Engel P, Moran NA (2013) The gut microbiota of insects—diversity in structure and function. *FEMS Microbiol Rev* 37:699–735. <https://doi.org/10.1111/1574-6976.12025>
3. Sudakaran S, Kost C, Kaltenpoth M (2017) Symbiont acquisition and replacement as a source of ecological innovation. *Trends Microbiol* 25:375–390. <https://doi.org/10.1016/j.tim.2017.02.014>
4. Bright M, Bulgheresi S (2010) A complex journey: transmission of microbial symbionts. *Nat Rev Microbiol* 8:218–230
5. Drown DM, Zee PC, Brandvain Y, Wade MJ (2013) Evolution of transmission mode in obligate symbionts. *Evol Ecol Res* 15:43–59
6. Salem H, Bauer E, Kirsch R, Berasategui A, Cripps M, Weiss B, Koga R, Fukumori K, Vogel H, Fukatsu T, Kaltenpoth M (2017) Drastic genome reduction in an herbivore's pectinolytic symbiont. *Cell* 171:1520–1531.e13. <https://doi.org/10.1016/j.cell.2017.10.029>
7. Fukatsu T, Hosokawa T (2002) Capsule-transmitted gut symbiotic bacterium of the Japanese common plataspid stinkbug, *Megacopta punctatissima*. *Appl Environ Microbiol* 62:389–396. <https://doi.org/10.1128/AEM.68.1.389>
8. Hosokawa T, Hironaka M, Mukai H, Inadomi K, Suzuki N, Fukatsu T (2012) Mothers never miss the moment: a fine-tuned mechanism for vertical symbiont transmission in a subsocial insect. *Anim Behav* 83:293–300. <https://doi.org/10.1016/j.anbehav.2011.11.006>
9. Salem H, Kreutzer E, Sudakaran S, Kaltenpoth M (2012) Actinobacteria as essential symbionts in firebugs and cotton stainers (Hemiptera, Pyrrhocoridae). *Environ Microbiol* 15:1956–1968. <https://doi.org/10.1111/1462-2920.12001>
10. Kikuchi Y, Hosokawa T, Fukatsu T (2007) Insect-microbe mutualism without vertical transmission: a stinkbug acquires a beneficial gut symbiont from the environment every generation. *Appl Environ Microbiol* 73:4308–4316. <https://doi.org/10.1128/AEM.00067-07>
11. Mason CJ, Raffa KF (2014) Acquisition and structuring of midgut bacterial communities in gypsy moth (Lepidoptera: Erebidiae) larvae. *Environ Entomol* 43:595–604. <https://doi.org/10.1603/EN14031>
12. Lu M, Hulcr J, Sun J (2016) The role of symbiotic microbes in insect invasions the role of symbiotic microbes in insect invasions. *Annu Rev Ecol Evol Syst* 47:487–505. <https://doi.org/10.1146/annurev-ecolsys-121415-032050>
13. Hulcr J, Stelinski LL (2017) The ambrosia symbiosis: from evolutionary ecology to practical management. *Annu Rev Entomol* 62: 285–303. <https://doi.org/10.1146/annurev-ento-031616-035105>
14. Six DL, Wingfield MJ (2011) The role of phytopathogenicity in bark beetle-fungus symbioses: a challenge to the classic paradigm.

- Annu Rev Entomol 56:255–272. <https://doi.org/10.1146/annurev-ento-120709-144839>
15. Slippers B, De Groot P, Wingfield, MJ (Eds.). (2011). The Sirex woodwasp and its fungal symbiont: research and management of a worldwide invasive pest. Springer Science & Business Media
 16. Ayres MP, Wilkens RT, Ruel JJ, Lombardero MJ, Vallery E (2000) Nitrogen budgets of phloem-feeding bark beetles with and without symbiotic fungi. *Ecology* 81:2198. <https://doi.org/10.2307/177108>
 17. Thompson BM, Grebenok RJ, Behmer ST, Gruner DS (2013) Microbial symbionts shape the sterol profile of the xylem-feeding woodwasp, *Sirex noctilio*. *J Chem Ecol* 39:129–139. <https://doi.org/10.1007/s10886-012-0222-7>
 18. Morales-Jiménez J, Zúñiga G, Villa-Tanaca L, Hernández-Rodríguez C (2009) Bacterial community and nitrogen fixation in the red turpentine beetle, *Dendroctonus valens* LeConte (Coleoptera: Curculionidae: Scolytinae). *Microb Ecol* 58:879–891. <https://doi.org/10.1007/s00248-009-9548-2>
 19. Morales-Jiménez J, Vera-Ponce de León A, García-Domínguez A, Vera-Ponce de León A, García-Domínguez A, Martínez-Romero E, Zúñiga G, Hernández-Rodríguez C (2013) Nitrogen-fixing and uricolytic bacteria associated with the gut of *Dendroctonus rhizophagus* and *Dendroctonus valens* (Curculionidae: Scolytinae). *Microb Ecol* 66:200–210. <https://doi.org/10.1007/s00248-013-0206-3>
 20. Boone CK, Keefover-Ring K, Mapes AC, Adams AS, Bohlmann J, Raffa KF (2013) Bacteria associated with a tree-killing insect reduce concentrations of plant defense compounds. *J Chem Ecol* 39:1003–1006. <https://doi.org/10.1007/s10886-013-0313-0>
 21. Cheng C, Xu L, Xu D, Lou Q, Lu M, Sun J (2016) Does cryptic microbiota mitigate pine resistance to an invasive beetle-fungus complex? Implications for invasion potential. *Sci Rep* 6:33110
 22. Xu L, Lou Q, Cheng C, Lu M, Sun J (2015) Gut-associated bacteria of *Dendroctonus valens* and their involvement in verbenone production. *Microb Ecol* 70:1012–1023. <https://doi.org/10.1007/s00248-015-0625-4>
 23. Cardoza YJ, Klepzig KD, Raffa KF (2006) Bacteria in oral secretions of an endophytic insect inhibit antagonistic fungi. *Ecol Entomol* 31:636–645. <https://doi.org/10.1111/j.1365-2311.2006.00829.x>
 24. Scott JJ, Oh D, Yuceer MC et al (2008) Bacterial protection of beetle-fungus mutualism. *Science* 322:63–63
 25. Adams AS, Currie CR, Cardoza Y, Klepzig KD, Raffa KF (2009) Effects of symbiotic bacteria and tree chemistry on the growth and reproduction of bark beetle fungal symbionts. *Can J For Res* 39:1133–1147. <https://doi.org/10.1139/X09-034>
 26. Adams AS, Jordan MS, Adams SM, Suen G, Goodwin LA, Davenport KW, Currie CR, Raffa KF (2011) Cellulose-degrading bacteria associated with the invasive woodwasp *Sirex noctilio*. *ISME J* 5:1323–1331. <https://doi.org/10.1038/ismej.2011.14>
 27. Therrien J, Mason CJ, Cale JA, Adams A, Aukema BH, Currie CR, Raffa KF, Erbilgin N (2015) Bacteria influence mountain pine beetle brood development through interactions with symbiotic and antagonistic fungi: implications for climate-driven host range expansion. *Oecologia* 179:467–485. <https://doi.org/10.1007/s00442-015-3356-9>
 28. Adams AS, Aylward FO, Adams SM, Erbilgin N, Aukema BH, Currie CR, Suen G, Raffa KF (2013) Mountain pine beetles colonizing historical and naive host trees are associated with a bacterial community highly enriched in genes contributing to terpene metabolism. *Appl Environ Microbiol* 79:3468–3475. <https://doi.org/10.1128/AEM.00068-13>
 29. Vasanthakumar A, Delalibera I, Handelsman J et al (2006) Characterization of gut-associated bacteria in larvae and adults of the southern pine beetle *Dendroctonus frontalis* Zimmermann. *Environ Entomol* 35:1710–1717
 30. Delalibera I, Vasanthakumar A, Burwitz B et al (2007) Composition of the bacterial community in the gut of the pine engraver, *Ips pini* (Say) (Coleoptera) colonizing red pine. *Symbiosis* 43:97–104
 31. Aylward FO, Suen G, Biedermann PHW, Adams AS, Scott JJ, Malfatti SA, Glavina del Rio T, Tringe SG, Poulsen M, Raffa KF, Klepzig KD, Currie CR (2014) Convergent bacterial microbiotas in the fungal agricultural systems of insects. *MBio* 5:1–10. <https://doi.org/10.1128/mBio.02077-14>
 32. Hulcr J, Adams AS, Raffa K, Hofstetter RW, Klepzig KD, Currie CR (2011) Presence and diversity of streptomyces in *Dendroctonus* and sympatric bark beetle galleries across North America. *Microb Ecol* 61:759–768. <https://doi.org/10.1007/s00248-010-9797-0>
 33. Six DL, Klepzig KD (2004) *Dendroctonus* bark beetles as model systems for studies on symbiosis. *Symbiosis* 37:207–232
 34. Slippers B, Coutinho TA, Wingfield BD, Wingfield MJ (2003) The genus *Amylostereum* and its association with woodwasps: a contemporary review. *S Afr J Sci* 99:70–74
 35. Beaver RA, Wilding N, Collins N et al (1989) Insect-fungus relationships in the bark and ambrosia beetles. *Insect-fungus interact*. Academic Press, London, pp 121–143
 36. Six DL (2003) A comparison of mycangial and phoretic fungi of individual mountain pine beetles. *Can J For Res* 33:1331–1334. <https://doi.org/10.1139/x03-047>
 37. Bracewell RR, Six DL (2015) Experimental evidence of bark beetle adaptation to a fungal symbiont. *Ecol Evol* 5:5109–5119. <https://doi.org/10.1002/ece3.1772>
 38. Six DL, Bentz BJ (2003) Fungi associated with the North American spruce beetle, *Dendroctonus rufipennis*. *Can J For Res* 33:1815–1820. <https://doi.org/10.1139/x03-107>
 39. Aukema BH, Werner RA, Haberkern KE, Illman BL, Clayton MK, Raffa KF (2005) Quantifying sources of variation in the frequency of fungi associated with spruce beetles: implications for hypothesis testing and sampling methodology in bark beetle-symbiont relationships. *For Ecol Manag* 217:187–202. <https://doi.org/10.1016/j.foreco.2005.05.062>
 40. Haack RA, Hérard F, Sun J, Turgeon JJ (2009) Managing invasive populations of Asian longhorned beetle and citrus longhorned beetle: a worldwide perspective. *Annu Rev Entomol* 55:521
 41. Meng PS, Hoover K, Keena MA (2015) Asian longhorned beetle (Coleoptera: Cerambycidae), an introduced pest of maple and other hardwood trees in North America and Europe. *J Integr Pest Manag* 6:4–4. <https://doi.org/10.1093/jipm/pmv003>
 42. Hu J, Angeli S, Schuetz S, Luo Y, Hajek AE (2009) Ecology and management of exotic and endemic Asian longhorned beetle *Anoplophora glabripennis*. *Agric For Entomol* 11:359–375
 43. Geib SM, Jimenez-Gasco MDM, Carlson JE, Hoover K (2009) Effect of host tree species on cellulase activity and bacterial community composition in the gut of larval Asian longhorned beetle. *Environ Entomol* 38:686–699
 44. Scully ED, Geib SM, Hoover K, Tien M, Tringe SG, Barry KW, Glavina del Rio T, Chovatia M, Herr JR, Carlson JE (2013) Metagenomic profiling reveals lignocellulose degrading system in a microbial community associated with a wood-feeding beetle. *PLoS One* 8:1–22. <https://doi.org/10.1371/journal.pone.0073827>
 45. Scully ED, Geib SM, Carlson JE, Tien M, McKenna D, Hoover K (2014) Functional genomics and microbiome profiling of the Asian longhorned beetle (*Anoplophora glabripennis*) reveal insights into the digestive physiology and nutritional ecology of wood feeding beetles. *BMC Genomics* 15:1096. <https://doi.org/10.1186/1471-2164-15-1096>
 46. Ayayee P, Rosa C, Ferry JG, Felton G, Saunders M, Hoover K (2014) Gut microbes contribute to nitrogen provisioning in a wood-feeding cerambycid. *Environ Entomol* 43:903–912. <https://doi.org/10.1603/EN14045>

47. Ayayee PA, Larsen T, Rosa C et al (2015) Essential amino acid supplementation by gut microbes of a wood-feeding cerambycid. *Environ Entomol* 45:66–73
48. Scully ED, Hoover K, Carlson JE, Tien M, Geib SM (2013) Midgut transcriptome profiling of *Anoplophora glabripennis*, a lignocellulose degrading cerambycid beetle. *BMC Genomics* 14:850. <https://doi.org/10.1186/1471-2164-14-850>
49. Herr JR, Scully ED, Geib SM, Hoover K, Carlson JE, Geiser DM (2016) Genome sequence of *Fusarium* isolate MYA-4552 from the midgut of *Anoplophora glabripennis*, an invasive, wood-boring beetle. *Genome Announc* 4:e00544–e00516
50. Geib SM, Scully ED, Jimenez-Gasco MDM et al (2012) Phylogenetic analysis of *Fusarium solani* associated with the Asian longhorned beetle, *Anoplophora glabripennis*. *Insects* 3: 141–160. <https://doi.org/10.3390/insects3010141>
51. Grünwald S, Pilhofer M, Höll W (2010) Microbial associations in gut systems of wood- and bark-inhabiting longhorned beetles (Coleoptera: Cerambycidae). *Syst Appl Microbiol* 33:25–34. <https://doi.org/10.1016/j.syapm.2009.10.002>
52. Geib SM, del Mar Jimenez-Gasco M, Carlson JE, Jimenez-Gasco MM, Carlson JE, Tien M, Jabbour R, Hoover K (2009) Microbial community profiling to investigate transmission of bacteria between life stages of the wood-boring beetle, *Anoplophora glabripennis*. *Microb Ecol* 58:199–211. <https://doi.org/10.1007/s00248-009-9501-4>
53. Keena M, Sanchez V (2006) Reproductive behaviors of Asian longhorned beetle. In: Mastro V, Lance D, Reardon R, Parra G (eds) Proceedings, Emerald Ash Borer Asian Longhorned Beetle Res. Technol. Dev. Meet. U.S. Department of Agriculture, Forest Service, Forest Health Technology Enterprise Team FHTET-2007-04, Cincinnati, OH, pp 123–124
54. Anbutsu H, Togashi K (1997) Oviposition behavior and response to the oviposition scars occupied by eggs in *Monochamus saltuarius* (Coleoptera: Cerambycidae). *Appl Entomol Zool* 32:541–549. <https://doi.org/10.1248/cpb.37.3229>
55. Keena MA (2005) Pourable artificial diet for rearing *Anoplophora glabripennis* (Coleoptera: Cerambycidae) and methods to optimize larval survival and synchronize development. *Ann Entomol Soc Am* 98:536–547. [https://doi.org/10.1603/0013-8746\(2005\)098\[0536:padfra\]2.0.co;2](https://doi.org/10.1603/0013-8746(2005)098[0536:padfra]2.0.co;2)
56. Mason CJ, Long DC, McCarthy EM et al (2017) Within gut physicochemical variation does not correspond to distinct resident fungal and bacterial communities in the tree-killing xylophage, *Anoplophora glabripennis*. *J Insect Physiol* 102:27–35. <https://doi.org/10.1016/j.jinsphys.2017.08.003>
57. Caporaso JG, Lauber CL, Walters WA, Berg-Lyons D, Huntley J, Fierer N, Owens SM, Betley J, Fraser L, Bauer M, Gormley N, Gilbert JA, Smith G, Knight R (2012) Ultra-high-throughput microbial community analysis on the Illumina HiSeq and MiSeq platforms. *ISME J* 6:1621–1624. <https://doi.org/10.1038/ismej.2012.8>
58. Gardes M, Bruns TD (1993) ITS primers with enhanced specificity for basidiomycetes-application to the identification of mycorrhizae and rusts. *Mol Ecol* 2:113–118
59. White TJ, Bruns T, Lee S, Taylor JW (1990) Amplification and direct sequencing of fungal ribosomal RNA genes for phylogenetics. *PCR Protoc a Guid to methods Appl* 18:315–322
60. Schloss PD, Westcott SL, Ryabin T, Hall JR, Hartmann M, Hollister EB, Lesniewski RA, Oakley BB, Parks DH, Robinson CJ, Sahl JW, Stres B, Thallinger GG, van Horn DJ, Weber CF (2009) Introducing mothur: open-source, platform-independent, community-supported software for describing and comparing microbial communities. *Appl Environ Microbiol* 75:7537–7541. <https://doi.org/10.1128/AEM.01541-09>
61. Gweon HS, Oliver A, Taylor J, Booth T, Gibbs M, Read DS, Griffiths RI, Schonroge K (2015) PIPITS: an automated pipeline for analyses of fungal internal transcribed spacer sequences from the Illumina sequencing platform. *Methods Ecol Evol* 6:973–980
62. Kozich JJ, Westcott SL, Baxter NT, Highlander SK, Schloss PD (2013) Development of a dual-index sequencing strategy and curation pipeline for analyzing amplicon sequence data on the MiSeq Illumina sequencing platform. *Appl Environ Microbiol* 79: 5112–5120
63. Kress WJ, Erickson DL (2007) A two-locus global dna barcode for land plants: the coding rbcL gene complements the non-coding trnH-psbA spacer region. doi: <https://doi.org/10.1371/journal.pone.0000508>
64. Nash S, Snyder W (1962) Quantitative estimations by plate counts of propagules of the bean root rot *Fusarium* in field soils. *Phytopathology* 52:567–572
65. R Core Team (2013) R: a language and environment for statistical Computing
66. Bates D, Maechler M, Bolker B, Walker S (2014) lme4: linear mixed-effects models using Eigen and S4
67. Clarke K, Gorley R (2015) PRIMER v7: user manual/tutorial. 296pp
68. Schloss PD, Delalibera I, Handelsman J, Raffa KF (2006) Bacteria associated with the guts of two wood-boring beetles: *Anoplophora glabripennis* and *Saperda vestita* (Cerambycidae). *Environ Entomol* 35:625–629. <https://doi.org/10.1603/0046-225X-35.3.625>
69. Mason CJ, Hanshew AS, Raffa KF (2015) Contributions by host trees and insect activity to bacterial communities in *Dendroctonus valens* (Coleoptera: Curculionidae) galleries, and their high overlap with other microbial assemblages of bark beetles. *Environ Entomol* 45:348–346. <https://doi.org/10.1093/ee/nvv184>
70. Hallmann J, Sikora RA (1996) Toxicity of fungal endophyte secondary metabolites to plant parasitic nematodes and soil-borne plant pathogenic fungi. 155–162
71. Altomare C, Perrone G, Zonno MC, et al. (2000) Biological characterization of fusapyrone and deoxyfusapyrone, two bioactive secondary metabolites of *Fusarium semitectum*. 1131–1135
72. Estbjerg H, Ielsen KRFN, Hrane ULFT, Lmholt SUE (2002) Production of trichothecenes and other secondary metabolites by *Fusarium culmorum* and *Fusarium equiseti* on common laboratory media and a soil organic matter agar: an ecological interpretation
73. Mason CJ, Raffa KF (2014) Acquisition and structuring of midgut bacterial communities in gypsy moth (Lepidoptera: Erebidae) larvae. *Environ Entomol* 43:595–604. <https://doi.org/10.1603/EN14031>
74. Hammer TJ, McMillan WO, Fierer N (2014) Metamorphosis of a butterfly-associated bacterial community. *PLoS One* 9:e86995. <https://doi.org/10.1371/journal.pone.0086995>
75. Staudacher H, Kaltenpoth M, Breeuwer JAJ, Menken SBJ (2016) Variability of bacterial communities in the moth *Heliothis virescens* indicates transient association with the host. 1–21. doi: <https://doi.org/10.5061/dryad.dv35j.Funding>
76. Chung SH, Scully ED, Peiffer M, Geib SM, Rosa C, Hoover K, Felton GW (2017) Host plant species determines symbiotic bacterial community mediating suppression of plant defenses. *Sci Rep* 7: 39690. <https://doi.org/10.1038/srep39690>
77. Nordlander RAN, Schmidt A, Berasategui A et al. (2016) The gut microbiota of the pine weevil is similar across Europe and resembles that of other conifer-feeding beetles 49:4014–4031. <https://doi.org/10.1111/mec.13702>
78. Hongoh Y, Deevong P, Inoue T, Moriya S, Trakulnaleamsai S, Ohkuma M, Vongkaluang C, Noparatnaraporn N, Kudo T (2005) Intra- and interspecific comparisons of bacterial diversity and community structure support coevolution of gut microbiota and termite host. *Appl Environ Microbiol* 71:6590–6599. <https://doi.org/10.1128/AEM.71.11.6590>

79. Brune A (2014) Symbiotic digestion of lignocellulose in termite guts. *Nature Microbiol* 12:168–180. <https://doi.org/10.1038/nmicro3182>
80. Donnell KO, Sink S, Libeskind-hadas R et al (2015) Discordant phylogenies suggest repeated host shifts in the *Fusarium*–*Euwallacea* ambrosia beetle mutualism. *Fungal Genet Biol* 82: 277–290. <https://doi.org/10.1016/j.fgb.2014.10.014>
81. Kasson MT, Donnell KO, Rooney AP et al (2013) An inordinate fondness for *Fusarium*: phylogenetic diversity of fusaria cultivated by ambrosia beetles in the genus *Euwallacea* on avocado and other plant hosts. *Fungal Genet Biol* 56:147–157. <https://doi.org/10.1016/j.fgb.2013.04.004>
82. Wong AC-N, Chaston JM, Douglas AE (2013) The inconstant gut microbiota of *Drosophila* species revealed by 16S rRNA gene analysis. *ISME J* 7:1922–1932. <https://doi.org/10.1038/ismej.2013.86>
83. Xiang H, Wei G, Jia S, et al (2006) Microbial communities in the larval midgut of laboratory and field populations of cotton bollworm (*Helicoverpa armigera*) 1092:1085–1092. <https://doi.org/10.1139/W06-064>
84. Scully ED, Hoover K, Carlson J, Tien M, Geib SM (2012) Proteomic analysis of *Fusarium solani* isolated from the Asian longhorned beetle, *Anoplophora glabripennis*. *PLoS One* 7: e32990. <https://doi.org/10.1371/journal.pone.0032990>
85. Geib SM, Filley TR, Hatcher PG, Hoover K, Carlson JE, Jimenez-Gasco MM, Nakagawa-Izumi A, Sleighter RL, Tien M (2008) Lignin degradation in wood-feeding insects. *Proc Natl Acad Sci U S A* 105:12932–12937. <https://doi.org/10.1073/pnas.0805257105>