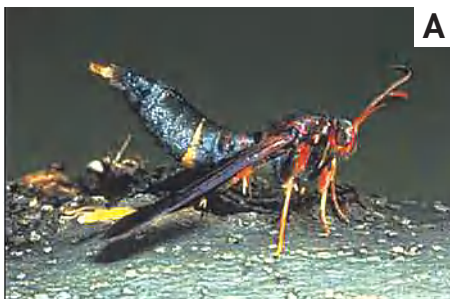


Native Borers and Emerald Ash Borer Look-alikes

Native Ash Borers

Mary Wilson, MSU Extension. Eric Rebeck, Michigan State University Dept. of Entomology.
Daniel Herms, Ohio State University Dept. of Entomology, OARDC



D.G. Nielsen, Ohio State University/OARDC



J. Solomon, USDA Forest Service www.forestryimages.com



D. Herms, Ohio State University/OARDC



D. Herms, Ohio State University/OARDC



G. Hoover, Pennsylvania State University



D. Herms, Ohio State University/OARDC

Native ash borers are North American insects that tunnel under the bark of ash trees, sometimes causing enough damage to seriously weaken trees.

These two borers attack healthy ash trees:

Banded ash clearwing, *Podosesia aureocincta*; adult (Fig. A), larva (Fig. B).

Ash/lilac borer, *Podosesia syringae*; adult (Fig. C).

- Wasp-mimicking moths that feed on xylem of ash trees.
- Larvae are round with small legs and expel frass from tree (Fig. D).
- Round exit hole (1/4 inch); pupal case exposed in exit hole upon emergence (Fig. E).

These three borers attack stressed or dying ash trees:

Redheaded ash borer, *Neoclytus acuminatus*; adult (Fig. F), larva (Fig. G).

Banded ash borer, *Neoclytus caprea*; adult (Fig. H).

- Longhorned beetles (roundheaded borers) that attack stressed ash trees, but also colonize elm, hickory, oak, linden and others.
- Larvae tunnel deep into xylem (Fig. I) and adults emerge from round-oval exit holes measuring 1/4 inch (Fig. J).



J. Solomon, USDA Forest Service www.forestryimages.com



Csoka, Hungary For Res Inst., www.forestryimages.com



J. Solomon, USDA Forest Service www.forestryimages.com



Emerald Ash Borer

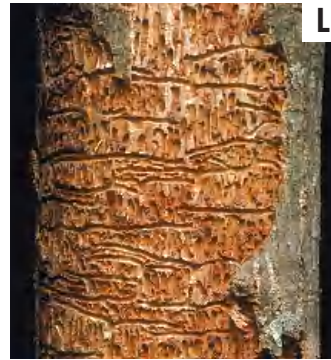
Native Borers (continued)

Eastern ash bark beetle, *Hylesinus aculeatus*; adult (Fig. K).

- Cylindrical bark beetle that forms galleries beneath the bark of ash trees (Fig. L).
- Infested trees peppered with tiny, round exit holes measuring approximately 1/16 inch (Fig. M).



J. Solomon, USDA Forest Service
www.forestryimages.com



J. Solomon, USDA Forest Service
www.forestryimages.com



J. Solomon, USDA Forest Service
www.forestryimages.com

Emerald Ash Borer Look-alikes

The following insects are common in Pennsylvania and could possibly be confused with the emerald ash borer.



Michigan State University



University of Arkansas



Michigan State University

- **Sixspotted tiger beetle, *Cicindela sexguttata***; adult measures 1/2 inch long (Fig. N).
- **Caterpillar hunter, *Calosoma scrutator***; adult measures 1 inch long (Fig. O).
- **Japanese beetle, *Popillia japonica***; adult measures slightly less than 1/2 inch long (Fig. P).
- **Bronze birch borer, *Agrilus anxius***; adult measures approximately 1/2 inch long (Fig. Q).
- **Twolined chestnut borer, *Agrilus bilineatus***; adult measures approximately 1/2 inch long (Fig. R).
- Several other uncommon metallic wood-boring beetles.



J. Zaboltny, USDA APHIS PPO



J. Zaboltny, USDA APHIS PPO

PENNSTATE



College of Agricultural Sciences
Cooperative Extension

Edited by: Gregory A. Hoover, Pennsylvania State University, Department of Entomology

This document was originally created and designed by Michigan State University and is used by permission from MSU Agriculture and Natural Resources Communications. Editing of the original has been allowed so that the document reflects issues facing the state of Pennsylvania.

The Pennsylvania State University is committed to the policy that all persons shall have equal access to programs, facilities, admission, and employment without regard to personal characteristics not related to ability, performance, or qualifications as determined by University policy or by state or federal authorities. It is the policy of the University to maintain an academic and work environment free of discrimination, including harassment. The Pennsylvania State University prohibits discrimination and harassment against any person because of age, ancestry, color, disability or handicap, national origin, race, religious creed, sex, sexual orientation, gender identity or veteran status. Discrimination or harassment against faculty, staff or students will not be tolerated at The Pennsylvania State University. Direct all inquiries regarding the nondiscrimination policy to the Affirmative Action Director, The Pennsylvania State University, 328 Boucke Building, University Park, PA 16802-2801, Tel (814) 865-4700/V, (814) 863-1150/TTY.

Where trade names appear in this bulletin, no discrimination is intended, and no endorsement by Penn State Cooperative Extension is implied.